

CCT2 Antibody



PACO44320

Product Information

Size:

50ul

Reactivity:

Human

Source:

Rabbit

Isotype:

IgG

Applications:

ELISA, WB, IHC, IP

Recommended dilutions:

ELISA:1:2000-1:10000, WB:1:1000-1:5000,
IHC:1:20-1:200, IP:1:200-1:2000

Protein Background:

Molecular chaperone; assists the folding of proteins upon ATP hydrolysis. As part of the BBS/CCT complex may play a role in the assembly of BBSome, a complex involved in ciliogenesis regulating transports vesicles to the cilia. Known to play a role, in vitro, in the folding of actin and tubulin.

Gene ID:

CCT2

Uniprot

P78371

Synonyms:

T-complex protein 1 subunit beta (TCP-1-beta) (CCT-beta), CCT2, 99D8.1 CCTB

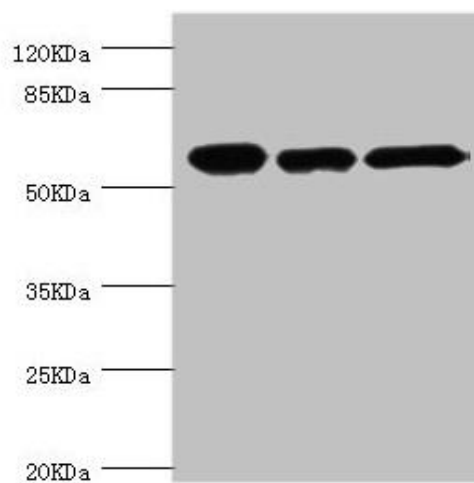
Immunogen:

Recombinant Human T-complex protein 1 subunit β protein (206-535AA).

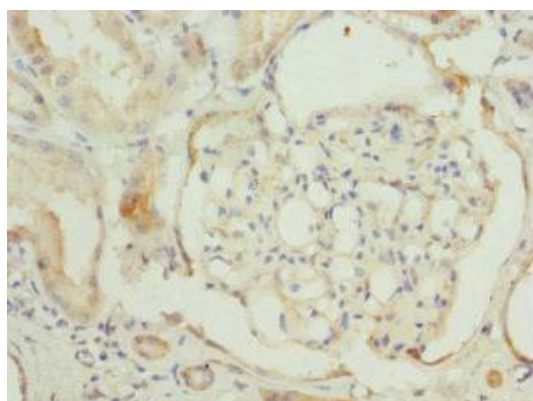
Storage:

PBS with 0.02% sodium azide, 50% glycerol, pH7.3.

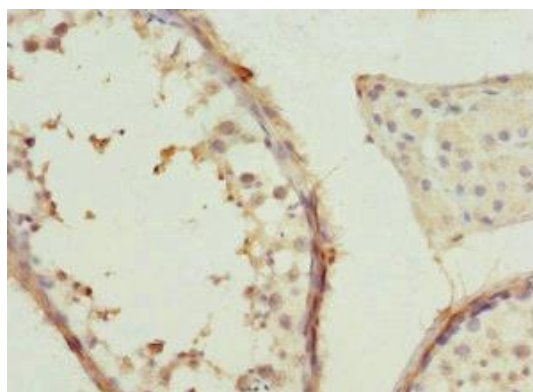
Product Images



Western blot. All lanes: CCT2 antibody at 5.63 μ g/ml. Lane 1: Jurkat whole cell lysate. Lane 2: NIH/3T3 whole cell lysate. Lane 3: MCF-7 whole cell lysate. Secondary. Goat polyclonal to rabbit IgG at 1/10000 dilution. Predicted band size: 58, 53 kDa. Observed band size: 58 kDa.



Immunohistochemistry of paraffin-embedded human kidney tissue using PACO44320 at dilution of 1:100.



Immunohistochemistry of paraffin-embedded human testis tissue using PACO44320 at dilution of 1:100.