

PACO44319

Product Information

Size:

50ul

Reactivity:

Human

Source:

Rabbit

Isotype:

IgG

Applications:

ELISA, IHC

Recommended dilutions:

ELISA:1:2000-1:10000, IHC:1:20-1:200

Protein Background:

Component of the CCM signaling pathway which is a crucial regulator of heart and vessel formation and integrity. May act through the stabilization of endothelial cell junctions. May function as a scaffold protein for MAP2K3-MAP3K3 signaling. Seems to play a major role in the modulation of MAP3K3-dependent p38 activation induced by hyperosmotic shock.

Gene ID:

CCM2

Uniprot

Q9BSQ5

Synonyms:

Cerebral cavernous malformations 2 protein (Malcavernin), CCM2, C7orf22

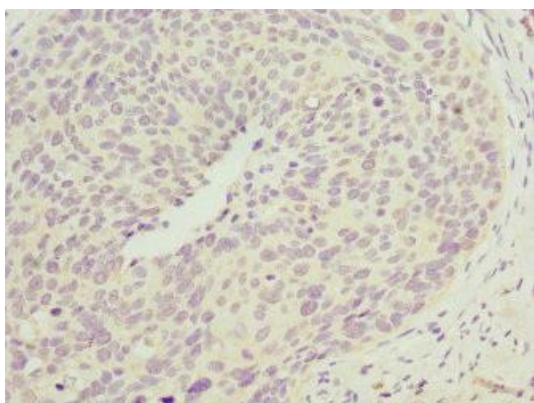
Immunogen:

Recombinant Human Cerebral cavernous malformations 2 protein (1-300AA).

Storage:

PBS with 0.02% sodium azide, 50% glycerol, pH7.3.

Product Images



Immunohistochemistry of paraffin-embedded human cervical cancer using PACO44319 at dilution of 1:100.