

PACO44318

Product Information

Size:

50ul

Reactivity:

Human

Source:

Rabbit

Isotype:

IgG

Applications:

ELISA, IHC

Recommended dilutions:

ELISA:1:2000-1:10000, IHC:1:20-1:200

Protein Background:

Reduces the gamma-methene bridge of the open tetrapyrrole, biliverdin IX alpha, to bilirubin with the concomitant oxidation of a NADH or NADPH cofactor.

Gene ID:

BLVRA

Uniprot

P53004

Synonyms:

Biliverdin reductase A (BVR A) (EC 1.3.1.24) (Biliverdin-IX alpha-reductase), BLVRA, BLVR BVR

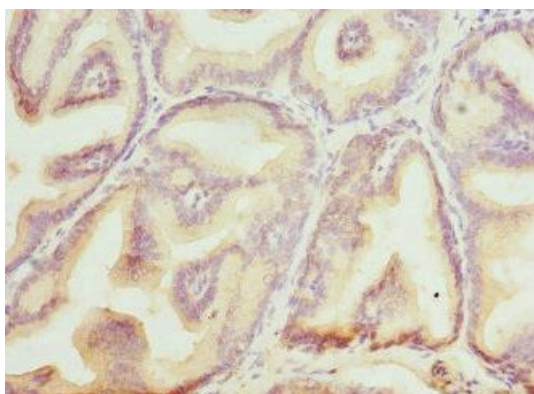
Immunogen:

Recombinant Human Biliverdin reductase A protein (1-296AA).

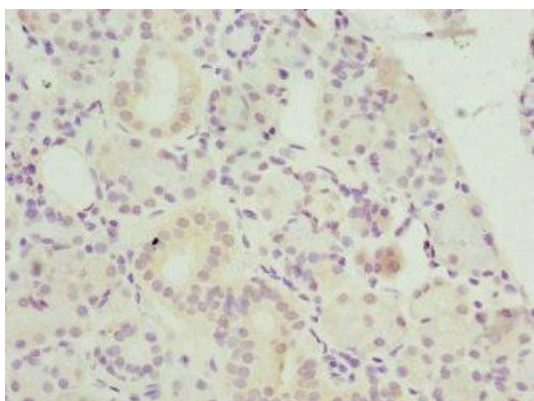
Storage:

PBS with 0.02% sodium azide, 50% glycerol, pH7.3.

Product Images



Immunohistochemistry of paraffin-embedded human prostate cancer using PACO44318 at dilution of 1:100.



Immunohistochemistry of paraffin-embedded human pancreatic tissue using PACO44318 at dilution of 1:100.