

PACO44315

---

## Product Information

**Size:**

50ul

**Reactivity:**

Human

**Source:**

Rabbit

**Isotype:**

IgG

**Applications:**

ELISA, WB, IHC

**Recommended dilutions:**

ELISA:1:2000-1:10000, WB:1:1000-1:5000,  
IHC:1:20-1:200

**Protein Background:**

Converts lysophosphatidic acid, (LPA) into phosphatidic acid, by incorporating an acyl moiety at the sn-2 position of the glycerol backbone.

**Gene ID:**

AGPAT2

**Uniprot**

O15120

**Synonyms:**

1-acyl-sn-glycerol-3-phosphate acyltransferase beta (EC 2.3.1.51) (1-acylglycerol-3-phosphate O-acyltransferase 2) (1-AGP acyltransferase 2) (1-AGPAT 2) (Lysophosphatidic acid, acyltransferase beta) (LPAAT-beta), AGPAT2

**Immunogen:**

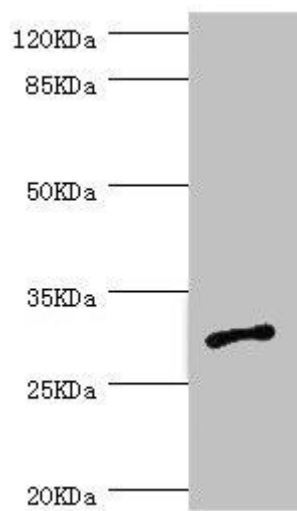
Recombinant Human 1-acyl-sn-glycerol-3-phosphate acyltransferase &beta; protein (199-278AA).

**Storage:**

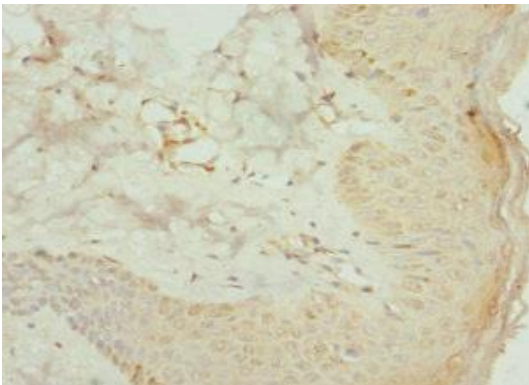
PBS with 0.02% sodium azide, 50% glycerol, pH7.3.

## Product Images

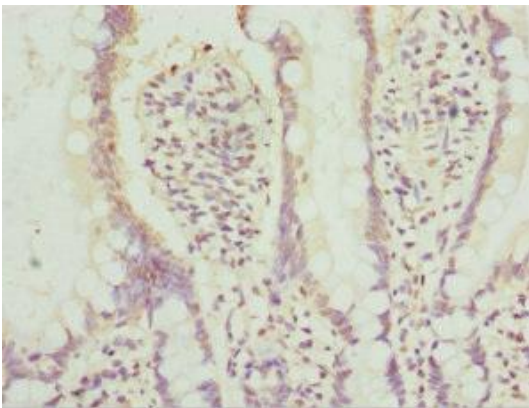
---



Western blot. All lanes: AGPAT2 antibody at 1.09 $\mu$ g/ml + Jurkat whole cell lysate. Secondary. Goat polyclonal to rabbit IgG at 1/10000 dilution. Predicted band size: 31, 28 kDa. Observed band size: 31 kDa.



Immunohistochemistry of paraffin-embedded human skin tissue using PACO44315 at dilution of 1:100.



Immunohistochemistry of paraffin-embedded human small intestine tissue using PACO44315 at dilution of 1:100.