

PACO44306

---

## Product Information

**Size:**

50ul

**Reactivity:**

Human

**Source:**

Rabbit

**Isotype:**

IgG

**Applications:**

ELISA, IHC, IF

**Recommended dilutions:**

ELISA:1:2000-1:10000, IHC:1:20-1:200,  
IF:1:50-1:200

**Protein Background:**

Plays a role in the regulatory network through which muscle cells coordinate their structural and functional states during growth, adaptation, and repair.

**Gene ID:**

SMPX

**Uniprot**

Q9UHP9

**Synonyms:**

Small muscular protein (Stretch-responsive skeletal muscle protein), SMPX, SRMX

**Immunogen:**

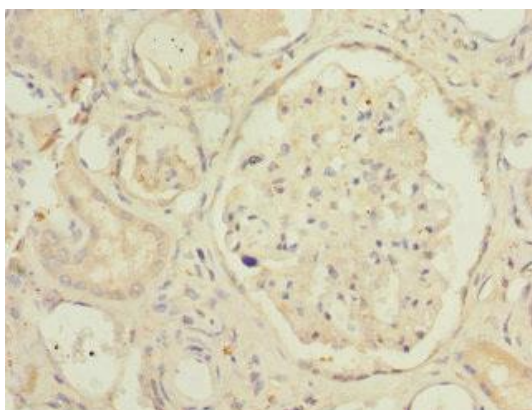
Recombinant Human Small muscular protein (1-88AA).

**Storage:**

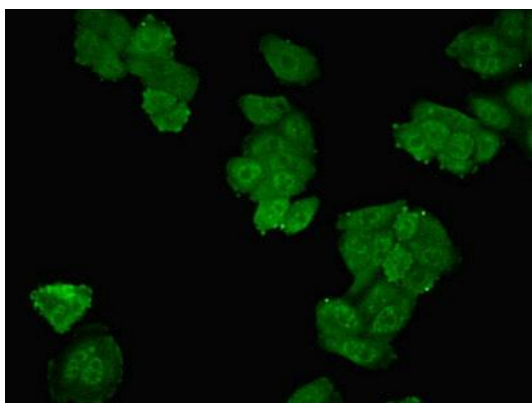
PBS with 0.02% sodium azide, 50% glycerol, pH7.3.

## Product Images

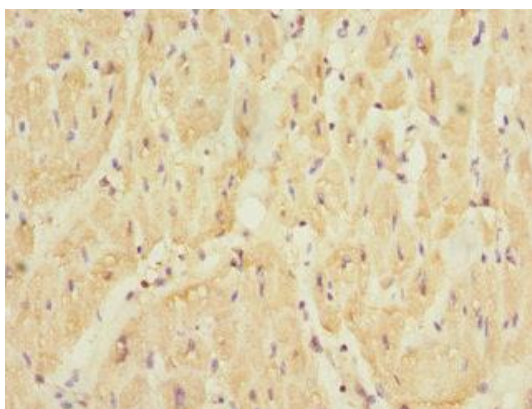
---



Immunohistochemistry of paraffin-embedded human kidney tissue using PACO44306 at dilution of 1:100.



Immunofluorescent analysis of HepG2 cells using PACO44306 at dilution of 1:100 and Alexa Fluor 488-conjugated AffiniPure Goat Anti-Rabbit IgG(H+L).



Immunohistochemistry of paraffin-embedded human heart tissue using PACO44306 at dilution of 1:100.