

# SEPHS1 Antibody



PACO44303

---

## Product Information

**Size:**

50ul

**Reactivity:**

Human, Mouse

**Source:**

Rabbit

**Isotype:**

IgG

**Applications:**

ELISA, WB, IHC

**Recommended dilutions:**

ELISA:1:2000-1:10000, WB:1:1000-1:5000,  
IHC:1:20-1:200

**Protein Background:**

Synthesizes selenophosphate from selenide and ATP.

**Gene ID:**

SEPHS1

**Uniprot**

P49903

**Synonyms:**

Selenide, water dikinase 1 (EC 2.7.9.3) (Selenium donor protein 1) (Selenophosphate synthase 1), SEPHS1, SELD SPS SPS1

**Immunogen:**

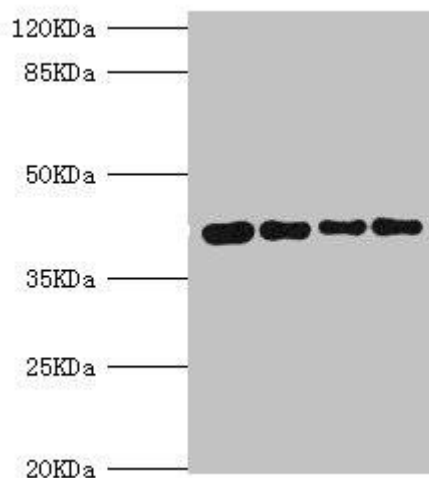
Recombinant Human Selenide, water dikinase 1 protein (1-392AA).

**Storage:**

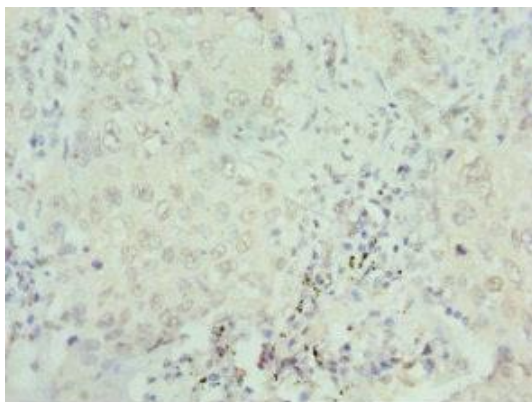
PBS with 0.02% sodium azide, 50% glycerol, pH7.3.

## Product Images

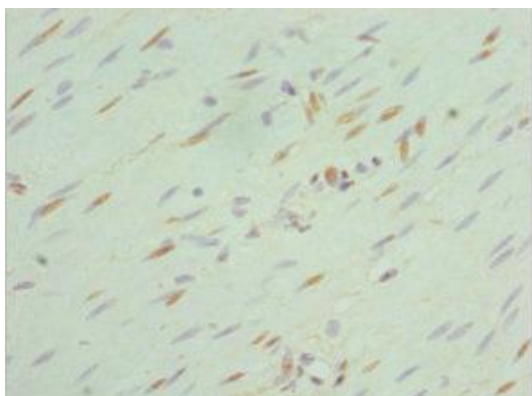
---



Western blot. All lanes: SEPHS1 antibody at 3.05 $\mu$ g/ml. Lane 1: Mouse liver tissue. Lane 2: HepG2 whole cell lysate. Lane 3: Mouse kidney tissue. Lane 4: U251 whole cell lysate. Secondary: Goat polyclonal to rabbit IgG at 1/10000 dilution. Predicted band size: 43, 36 kDa. Observed band size: 43 kDa.



Immunohistochemistry of paraffin-embedded human lung cancer using PACO44303 at dilution of 1:100.



Immunohistochemistry of paraffin-embedded human colon cancer using PACO44303 at dilution of 1:100.