

PACO44300

Product Information

Size:

50ul

Reactivity:

Human, Mouse

Source:

Rabbit

Isotype:

IgG

Applications:

ELISA, WB, IHC

Recommended dilutions:

ELISA:1:2000-1:10000, WB:1:1000-1:5000,
IHC:1:20-1:200

Protein Background:

cytosol, extracellular exosome, membrane, identical protein binding, phosphoribosylaminoimidazole carboxylase activity, phosphoribosylaminoimidazolesuccinocarboxamide synthase activity, 'de novo' IMP biosynthetic process, adenine biosynthetic process, purine nucleobase biosynthetic process, purine ribonucleoside monophosphate biosynthetic process.

Gene ID:

PAICS

Uniprot

P22234

Synonyms:

Multifunctional protein ADE2 [Includes: Phosphoribosylaminoimidazole-succinocarboxamide synthase (EC 6.3.2.6) (SAICAR synthetase); Phosphoribosylaminoimidazole carboxylase (EC 4.1.1.21) (AIR carboxylase) (AIRC)], PAICS, ADE2 AIRC PAIS

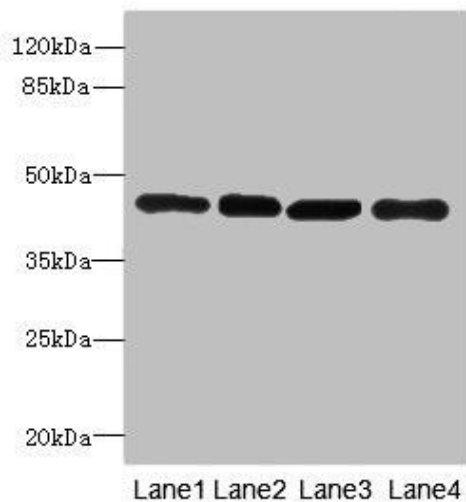
Immunogen:

Recombinant Human Multifunctional protein ADE2 protein (176-425AA).

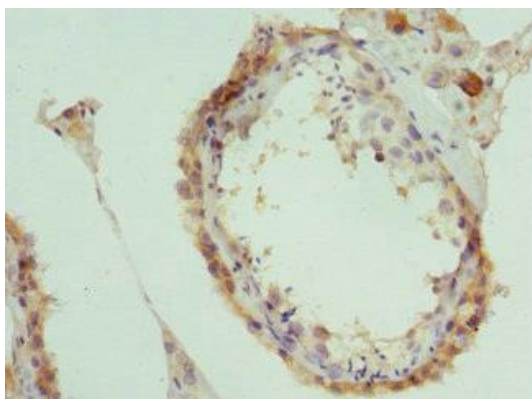
Storage:

PBS with 0.02% sodium azide, 50% glycerol, pH7.3.

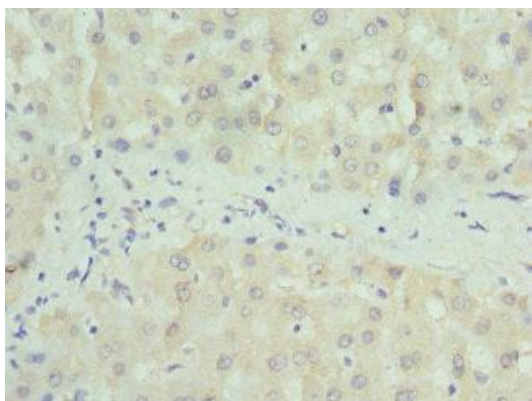
Product Images



Western blot. All lanes: PAICSantibody at 3.98 μ g/ml. Lane 1: HeLa whole cell lysate. Lane 2: Raji whole cell lysate. Lane 3: 293T whole cell lysate. Lane 4: NIH/3T3 whole cell lysate. Secondary: Goat polyclonal to rabbit IgG at 1/10000 dilution. Predicted band size: 47 kDa. Observed band size: 47 kDa.



Immunohistochemistry of paraffin-embedded human testis tissue using PACO44300 at dilution of 1:100.



Immunohistochemistry of paraffin-embedded human liver tissue using PACO44300 at dilution of 1:100.