

PACO44297

Product Information

Size:

50ul

Reactivity:

Human

Source:

Rabbit

Isotype:

IgG

Applications:

ELISA, IHC, IF

Recommended dilutions:

ELISA:1:2000-1:10000, IHC:1:20-1:200,
IF:1:50-1:200

Protein Background:

Adapter protein in a cytoplasmic complex linking beta-integrins to the actin cytoskeleton, bridges the complex to cell surface receptor tyrosine kinases and growth factor receptors. Involved in the regulation of cell survival, cell proliferation and cell differentiation.

Gene ID:

LIMS1

Uniprot

P48059

Synonyms:

LIM and senescent cell antigen-like-containing domain protein 1 (Particularly interesting new Cys-His protein 1) (PINCH-1) (Renal carcinoma antigen NY-REN-48), LIMS1, PINCH PINCH1

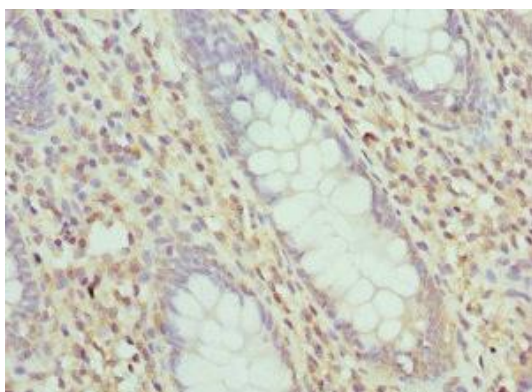
Immunogen:

Recombinant Human LIM and senescent cell antigen-like-containing domain protein 1 protein (1-325AA).

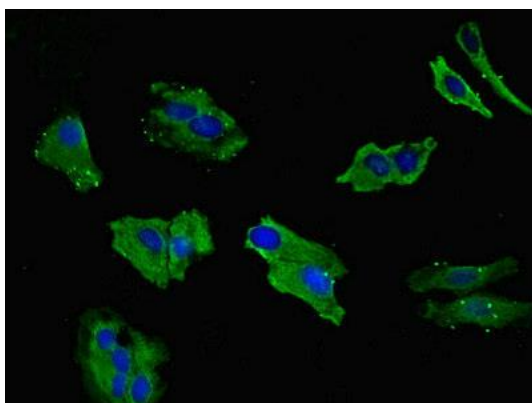
Storage:

PBS with 0.02% sodium azide, 50% glycerol, pH7.3.

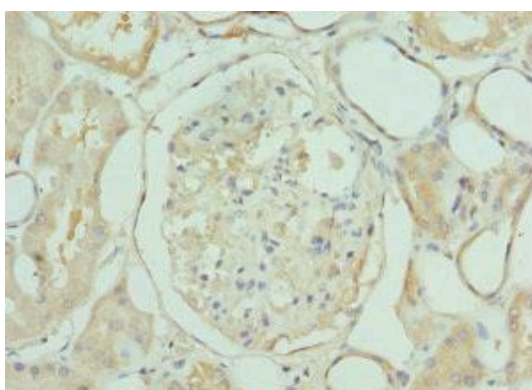
Product Images



Immunohistochemistry of paraffin-embedded human colon cancer using PACO44297 at dilution of 1:100.



Immunofluorescent analysis of HeLa cells using PACO44297 at dilution of 1:100 and Alexa Fluor 488-conjugated AffiniPure Goat Anti-Rabbit IgG(H+L).



Immunohistochemistry of paraffin-embedded human kidney tissue using PACO44297 at dilution of 1:100.