

PACO44291

Product Information

Size:

50ul

Reactivity:

Human, Mouse, Rat

Source:

Rabbit

Isotype:

IgG

Applications:

ELISA, WB, IHC

Recommended dilutions:

ELISA:1:2000-1:10000, WB:1:1000-1:5000,
IHC:1:20-1:200

Protein Background:

Component of the Integrator complex, a complex involved in the small nuclear RNAs (snRNA) U1 and U2 transcription and in their 3'-box-dependent processing. The Integrator complex is associated with the C-terminal domain (CTD) of RNA polymerase II largest subunit (POLR2A) and is recruited to the U1 and U2 snRNAs genes.

Gene ID:

INTS10

Uniprot

Q9NVR2

Synonyms:

Integrator complex subunit 10 (Int10), INTS10, C8orf35

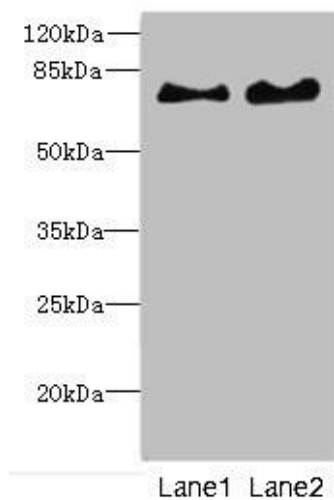
Immunogen:

Recombinant Human Integrator complex subunit 10 protein (451-710AA).

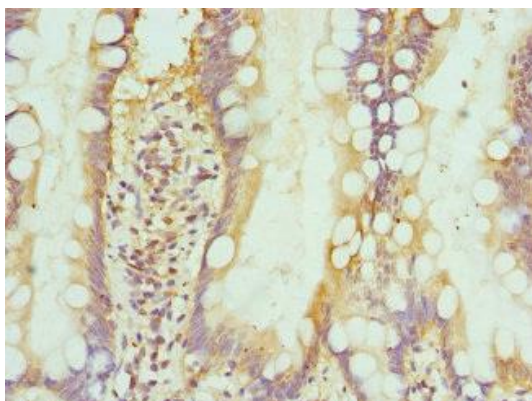
Storage:

PBS with 0.02% sodium azide, 50% glycerol, pH7.3.

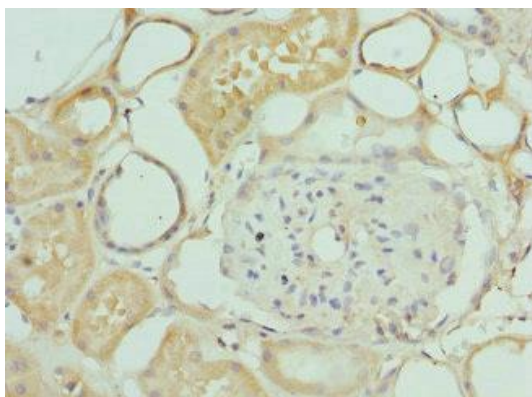
Product Images



Western blot. All lanes: INTS10 antibody at 4.35 μ g/ml. Lane 1: Mouse kidney tissue. Lane 2: Rat gonadal tissue. Secondary: Goat polyclonal to rabbit IgG at 1/10000 dilution. Predicted band size: 82 kDa. Observed band size: 82 kDa.



Immunohistochemistry of paraffin-embedded human small intestine tissue using PACO44291 at dilution of 1:100.



Immunohistochemistry of paraffin-embedded human kidney tissue using PACO44291 at dilution of 1:100.