

PACO44271

Product Information

Size:

50ul

Reactivity:

Human

Source:

Rabbit

Isotype:

IgG

Applications:

ELISA, WB, IHC

Recommended dilutions:

ELISA:1:2000-1:10000, WB:1:1000-1:5000,
IHC:1:20-1:200

Protein Background:

Required for vesicular transport between the endoplasmic reticulum and the Golgi apparatus.

Gene ID:

NAPG

Uniprot

Q99747

Synonyms:

Gamma-soluble NSF attachment protein (SNAP-gamma) (N-ethylmaleimide-sensitive factor attachment protein gamma), NAPG, SNAPG

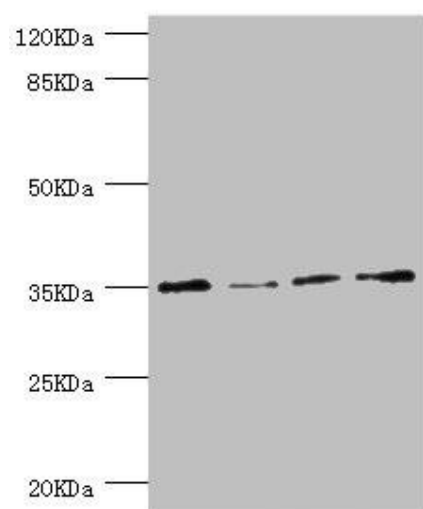
Immunogen:

Recombinant Human Gamma-soluble NSF attachment protein (1-312AA).

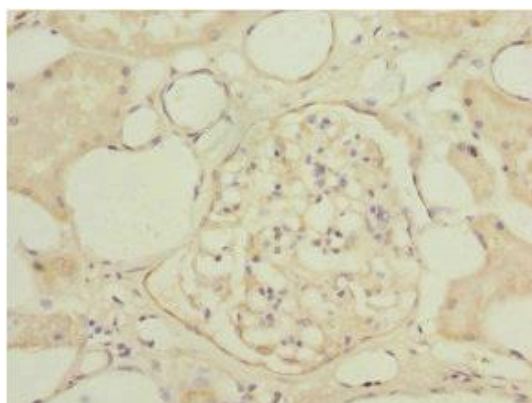
Storage:

PBS with 0.02% sodium azide, 50% glycerol, pH7.3.

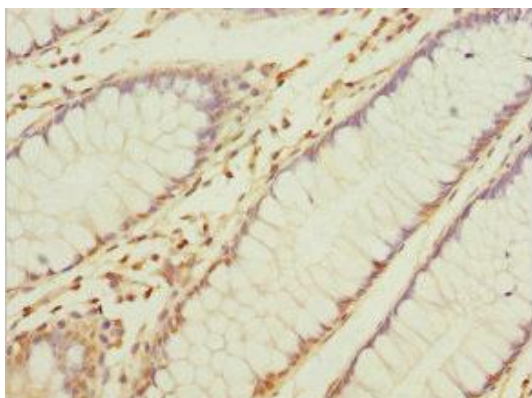
Product Images



Western blot. All lanes: NAPG antibody at 1.1 μ g/ml. Lane 1: HepG2 whole cell lysate. Lane 2: Hela whole cell lysate. Lane 3: U251 whole cell lysate. Lane 4: K562 whole cell lysate. Secondary. Goat polyclonal to rabbit IgG at 1/10000 dilution. Predicted band size: 35, 26 kDa. Observed band size: 35 kDa.



Immunohistochemistry of paraffin-embedded human kidney tissue using PACO44271 at dilution of 1:100.



Immunohistochemistry of paraffin-embedded human colon cancer using PACO44271 at dilution of 1:100.