

LY86 Antibody



PACO44240

Product Information

Size:

50ul

Reactivity:

Human

Source:

Rabbit

Isotype:

IgG

Applications:

ELISA, IHC

Recommended dilutions:

ELISA:1:2000-1:10000, IHC:1:20-1:200

Protein Background:

May cooperate with CD180 and TLR4 to mediate the innate immune response to bacterial lipopolysaccharide (LPS) and cytokine production. Important for efficient CD180 cell surface expression.

Gene ID:

LY86

Uniprot

O95711

Synonyms:

Lymphocyte antigen 86 (Ly-86) (Protein MD-1), LY86, MD1

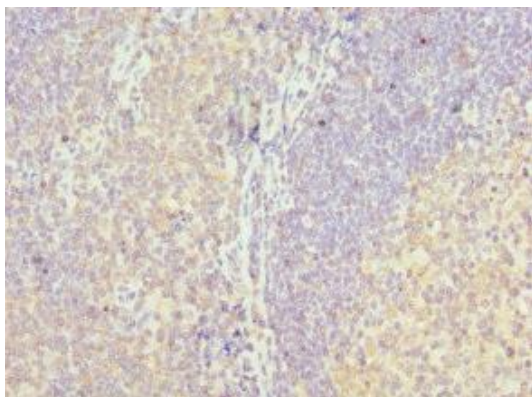
Immunogen:

Recombinant Human Lymphocyte antigen 86 protein (21-162AA).

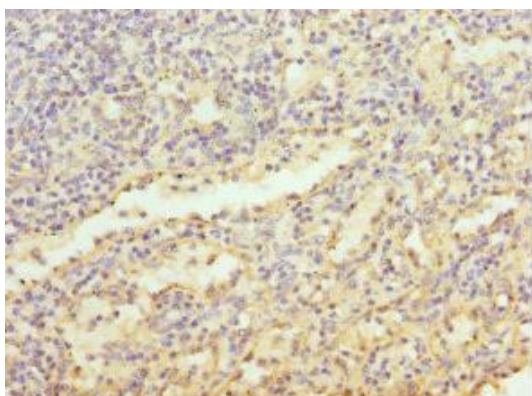
Storage:

PBS with 0.02% sodium azide, 50% glycerol, pH7.3.

Product Images



Immunohistochemistry of paraffin-embedded human tonsil tissue using PACO44240 at dilution of 1:100.



Immunohistochemistry of paraffin-embedded human spleen tissue using PACO44240 at dilution of 1:100.