

PACO44238

---

## Product Information

**Size:**

50ul

**Reactivity:**

Human

**Source:**

Rabbit

**Isotype:**

IgG

**Applications:**

ELISA, IHC, IF

**Recommended dilutions:**

ELISA:1:2000-1:10000, IHC:1:20-1:200,  
IF:1:50-1:200

**Protein Background:**

Cytotoxic chymotrypsin-like serine protease with preference for bulky and aromatic residues at the P1 position and acid, c residues at the P3' and P4' sites. Probably necessary for target cell lysis in cell-mediated immune responses. Participates in the antiviral response via direct cleavage of several proteins essential for viral replication.

**Gene ID:**

GZMH

**Uniprot**

P20718

**Synonyms:**

Granzyme H (EC 3.4.21. -) (CCP-X) (Cathepsin G-like 2) (CTSG2) (Cytotoxic T-lymphocyte proteinase) (Cytotoxic serine protease C) (CSP-C), GZMH, CGL2 CTSG2

**Immunogen:**

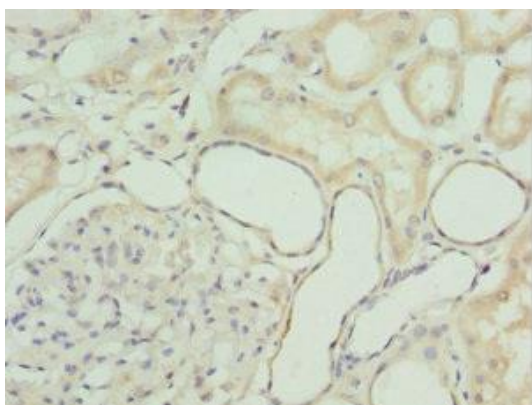
Recombinant Human Granzyme H protein (20-246AA).

**Storage:**

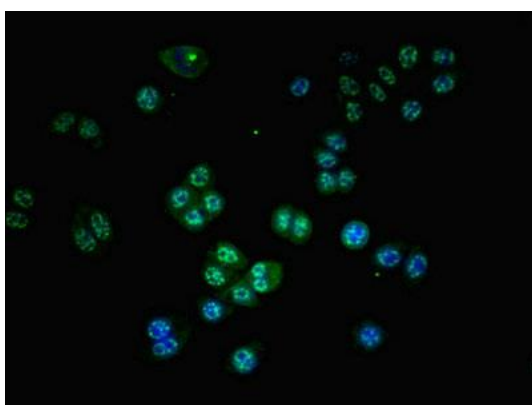
PBS with 0.02% sodium azide, 50% glycerol, pH7.3.

## Product Images

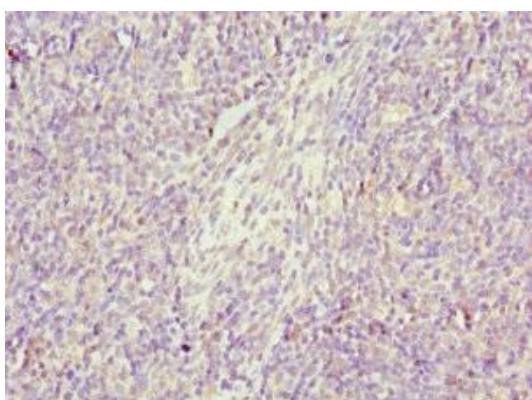
---



Immunohistochemistry of paraffin-embedded human kidney tissue using PACO44238 at dilution of 1:100.



Immunofluorescent analysis of PC-3 cells using PACO44238 at dilution of 1:100 and Alexa Fluor 488-conjugated AffiniPure Goat Anti-Rabbit IgG(H+L).



Immunohistochemistry of paraffin-embedded human thymus tissue using PACO44238 at dilution of 1:100.