

# CFDP1 Antibody



PACO44233

---

## Product Information

**Size:**

50ul

**Reactivity:**

Human

**Source:**

Rabbit

**Isotype:**

IgG

**Applications:**

ELISA, IHC

**Recommended dilutions:**

ELISA:1:2000-1:10000, IHC:1:20-1:200

**Protein Background:**

May play a role during embryogenesis.

**Gene ID:**

CFDP1

**Uniprot**

Q9UEE9

**Synonyms:**

Craniofacial development protein 1 (Bucentaur), CFDP1, BCNT CENP-29

**Immunogen:**

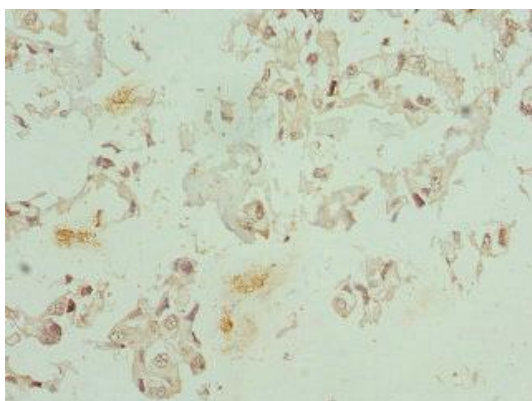
Recombinant Human Craniofacial development protein 1 protein (1-299AA).

**Storage:**

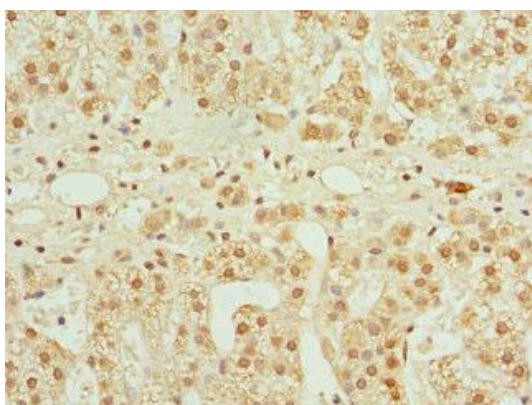
PBS with 0.02% sodium azide, 50% glycerol, pH7.3.

## Product Images

---



Immunohistochemistry of paraffin-embedded human bladder cancer using PACO44233 at dilution of 1:100.



Immunohistochemistry of paraffin-embedded human adrenal gland tissue using PACO44233 at dilution of 1:100.