

# BTG1 Antibody



PACO44231

---

## Product Information

**Size:**

50ul

**Reactivity:**

Human

**Source:**

Rabbit

**Isotype:**

IgG

**Applications:**

ELISA, IHC

**Recommended dilutions:**

ELISA:1:2000-1:10000, IHC:1:20-1:200

**Protein Background:**

Anti-proliferative protein.

**Gene ID:**

BTG1

**Uniprot**

P62324

**Synonyms:**

Protein BTG1 (B-cell translocation gene 1 protein), BTG1

**Immunogen:**

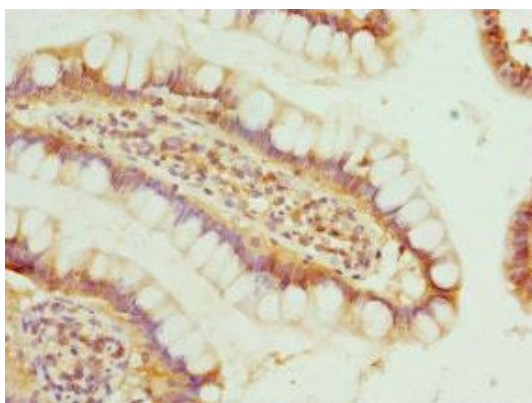
Recombinant Human Protein BTG1 protein (22-171AA).

**Storage:**

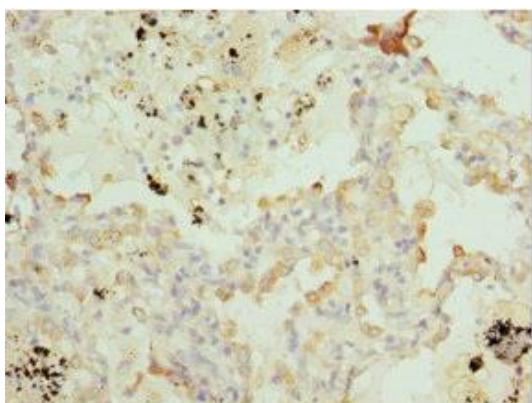
PBS with 0.02% sodium azide, 50% glycerol, pH7.3.

## Product Images

---



Immunohistochemistry of paraffin-embedded human small intestine tissue using PACO44231 at dilution of 1:100.



Immunohistochemistry of paraffin-embedded human lung cancer using PACO44231 at dilution of 1:100.