

PACO44227

Product Information

Size:

50ul

Reactivity:

Human

Source:

Rabbit

Isotype:

IgG

Applications:

ELISA, WB, IHC

Recommended dilutions:

ELISA:1:2000-1:10000, WB:1:1000-1:5000,
IHC:1:20-1:200

Protein Background:

E3 ubiquitin ligase involved in the retrotranslocation and turnover of membrane and secretory proteins from the ER through a set of processes named ER-associated degradation (ERAD). This process acts on misfolded proteins as well as in the regulated degradation of correctly folded proteins. Enhances ionizing radiation-induced p53/TP53 stability and apoptosis via ubiquitinating MDM2 and AKT1 and decreasing AKT1 kinase activity through MDM2 and AKT1 proteasomal degradation. Regulates ER stress-induced autophagy, and may act as a tumor suppressor.

Gene ID:

TRIM13

Uniprot

O60858

Synonyms:

E3 ubiquitin-protein ligase TRIM13 (EC 2.3.2.27) (B-cell chronic lymphocytic leukemia tumor suppressor Leu5) (Leukemia-associated protein 5) (Putative tumor suppressor RFP2) (RING finger protein 77) (RING-type E3 ubiquitin transferase TRIM13) (Ret finger protein 2) (Tripartite motif-containing protein 13), TRIM13, LEU5 RFP2 RNF77

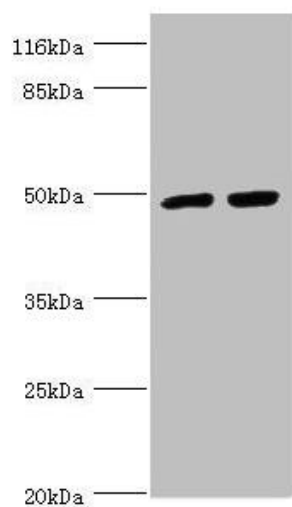
Immunogen:

Recombinant Human E3 ubiquitin-protein ligase TRIM13 protein (40-310AA).

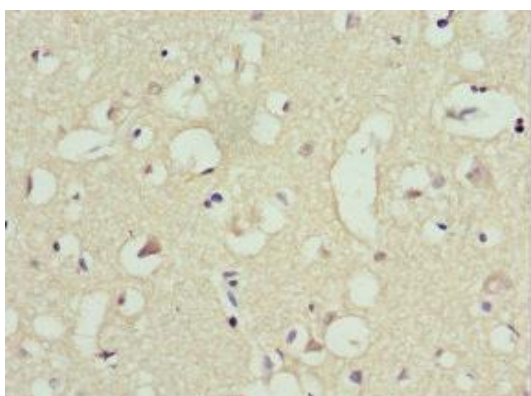
Storage:

PBS with 0.02% sodium azide, 50% glycerol, pH7.3.

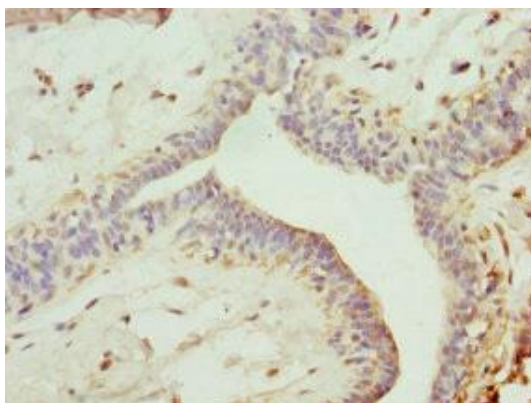
Product Images



Western blot. All lanes: TRIM13 antibody at 1.44 μ g/ml. Lane 1: 293T whole cell lysate. Lane 2: Hela whole cell lysate. Secondary. Goat polyclonal to rabbit IgG at 1/10000 dilution. Predicted band size: 47, 20, 48 kDa. Observed band size: 48 kDa.



Immunohistochemistry of paraffin-embedded human brain tissue using PACO44227 at dilution of 1:100.



Immunohistochemistry of paraffin-embedded human breast cancer using PACO44227 at dilution of 1:100.