

# SH3GL2 Antibody



PACO44210

---

## Product Information

**Size:**

50ul

**Reactivity:**

Human

**Source:**

Rabbit

**Isotype:**

IgG

**Applications:**

ELISA, IHC

**Recommended dilutions:**

ELISA:1:2000-1:10000, IHC:1:20-1:200

**Protein Background:**

Implicated in synaptic vesicle endocytosis. May recruit other proteins to membranes with high curvature.

**Gene ID:**

SH3GL2

**Uniprot**

Q99962

**Synonyms:**

Endophilin-A1 (EEN-B1) (Endophilin-1) (SH3 domain protein 2A) (SH3 domain-containing GRB2-like protein 2), SH3GL2, CNSA2 SH3D2A

**Immunogen:**

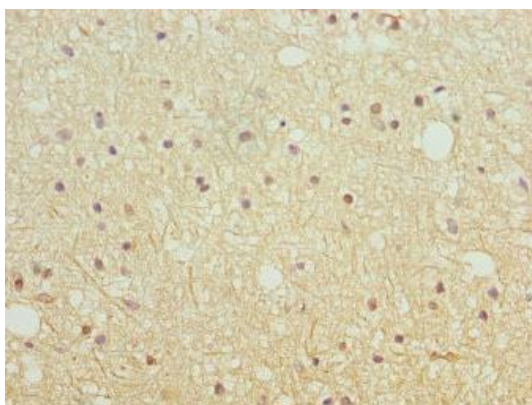
Recombinant Human Endophilin-A1 protein (1-270AA).

**Storage:**

PBS with 0.02% sodium azide, 50% glycerol, pH7.3.

## Product Images

---



Immunohistochemistry of paraffin-embedded human brain tissue using PACO44210 at dilution of 1:100.