

# PSMF1 Antibody



PACO44201

---

## Product Information

**Size:**

50ul

**Reactivity:**

Human

**Source:**

Rabbit

**Isotype:**

IgG

**Applications:**

ELISA, WB, IHC, IF

**Recommended dilutions:**

ELISA:1:2000-1:10000, WB:1:500-1:2000,  
IHC:1:20-1:200, IF:1:50-1:200

**Protein Background:**

Plays an important role in control of proteasome function. Inhibits the hydrolysis of protein and peptide substrates by the 20S proteasome. Also inhibits the activation of the proteasome by the proteasome regulatory proteins PA700 and PA28.

**Gene ID:**

PSMF1

**Uniprot**

Q92530

**Synonyms:**

Proteasome inhibitor PI31 subunit (hPI31), PSMF1

**Immunogen:**

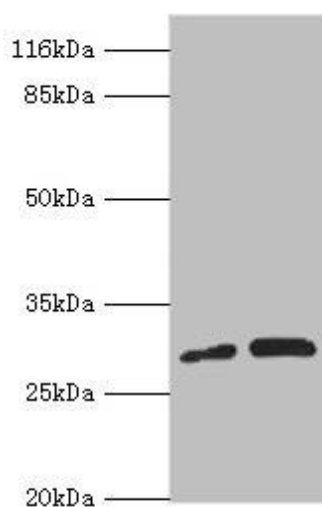
Recombinant Human Proteasome inhibitor PI31 subunit protein (1-271AA).

**Storage:**

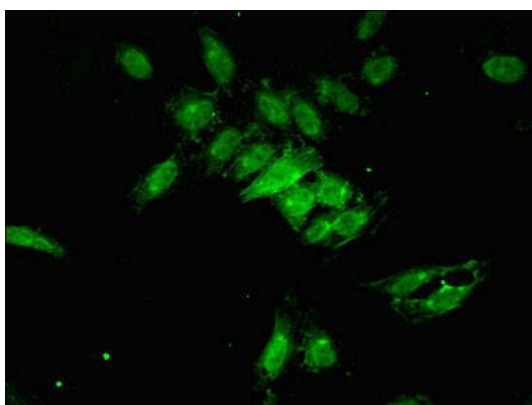
PBS with 0.02% sodium azide, 50% glycerol, pH7.3.

## Product Images

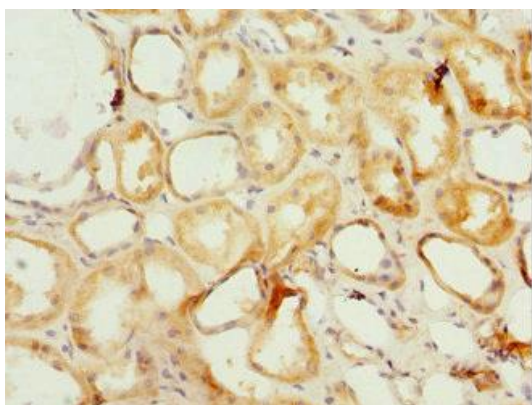
---



Western blot. All lanes: PSMF1 antibody at 1.28 $\mu$ g/ml. Lane 1: A549 whole cell lysate. Lane 2: K562 whole cell lysate. Secondary. Goat polyclonal to rabbit IgG at 1/10000 dilution. Predicted band size: 30 kDa. Observed band size: 30 kDa.



Immunofluorescent analysis of HeLa cells using PACO44201 at dilution of 1:100 and Alexa Fluor 488-conjugated AffiniPure Goat Anti-Rabbit IgG(H+L).



Immunohistochemistry of paraffin-embedded human kidney tissue using PACO44201 at dilution of 1:100.