

AP2A2 Antibody



PACO44187

Product Information

Size:

50ul

Reactivity:

Human, Mouse

Source:

Rabbit

Isotype:

IgG

Applications:

ELISA, WB, IHC

Recommended dilutions:

ELISA:1:2000-1:10000, WB:1:1000-1:5000,
IHC:1:20-1:200

Protein Background:**Gene ID:**

AP2A2

Uniprot

O94973

Synonyms:

AP-2 complex subunit alpha-2 (100 kDa coated vesicle protein C) (Adaptor protein complex AP-2 subunit alpha-2) (Adaptor-related protein complex 2 subunit alpha-2) (Alpha-adaptin C) (Alpha2-adaptin) (Clathrin assembly protein complex 2 alpha-C large chain) (Huntingtin yeast partner J) (Huntingtin-interacting protein 9) (HIP-9) (Huntingtin-interacting protein J) (Plasma membrane adaptor HA2/AP2 adaptin alpha C subunit), AP2A2, ADTAB CLAPA2 HIP9 HYPJ KIAA0899

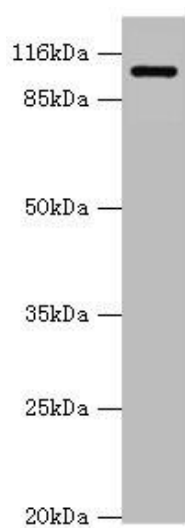
Immunogen:

Recombinant Human AP-2 complex subunit alpha-2 protein (590-939AA).

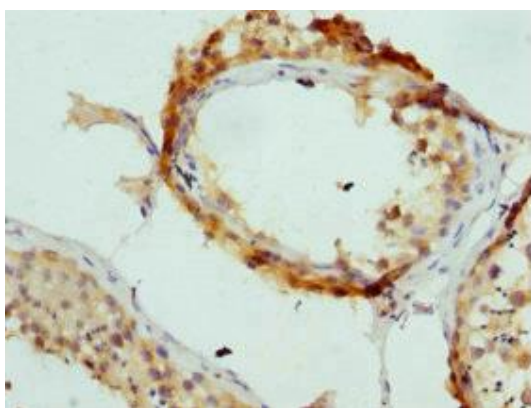
Storage:

PBS with 0.02% sodium azide, 50% glycerol, pH7.3.

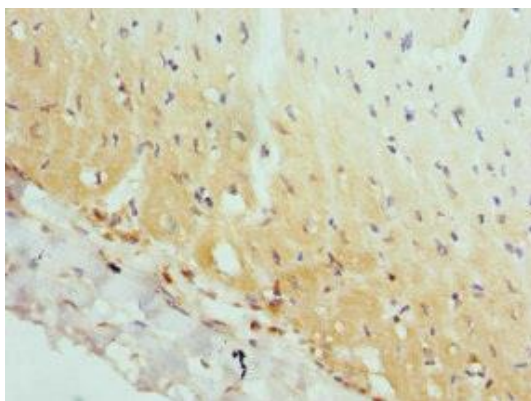
Product Images



Western blot. All lanes: AP2A2 antibody at 0.61 μ g/ml + Mouse brain tissue. Secondary. Goat polyclonal to rabbit IgG at 1/10000 dilution. Predicted band size: 104, 105, 74 kDa. Observed band size: 104 kDa.



Immunohistochemistry of paraffin-embedded human testis tissue using PACO44187 at dilution of 1:100.



Immunohistochemistry of paraffin-embedded human heart tissue using PACO44187 at dilution of 1:100.