

PACO44174

Product Information

Size:

50ul

Reactivity:

Human, Mouse

Source:

Rabbit

Isotype:

IgG

Applications:

ELISA, WB, IHC

Recommended dilutions:

ELISA:1:2000-1:10000, WB:1:1000-1:5000,
IHC:1:20-1:200

Protein Background:

Isoform 1 plays a critical role in signaling transduction pathways and phosphoprotein network topology in red blood cells. May play a role in osteoclast formation and function.

Gene ID:

PTPRE

Uniprot

P23469

Synonyms:

Receptor-type tyrosine-protein phosphatase epsilon (Protein-tyrosine phosphatase epsilon) (R-PTP-epsilon) (EC 3.1.3.48), PTPRE

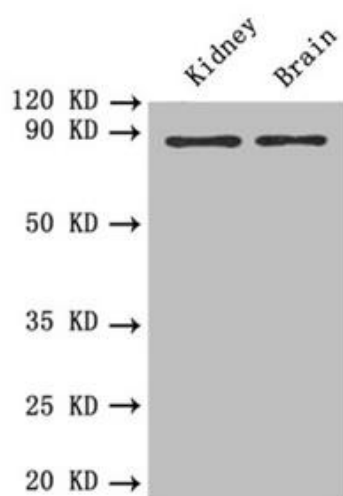
Immunogen:

Recombinant Human Receptor-type tyrosine-protein phosphatase epsilon protein (20-200AA).

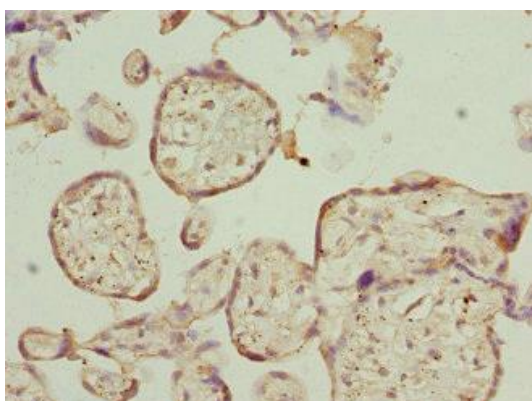
Storage:

PBS with 0.02% sodium azide, 50% glycerol, pH7.3.

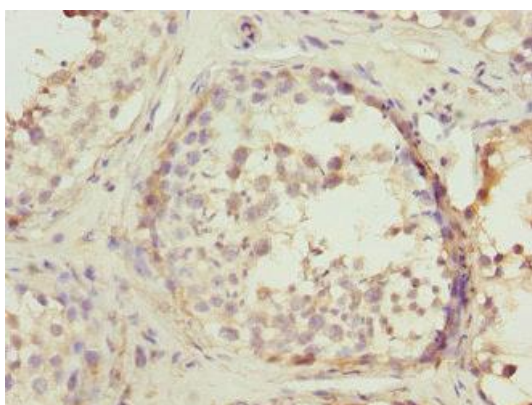
Product Images



Western blot. All lanes: PTPRE antibody at 0.6 $\mu\text{g/ml}$. Lane 1: Mouse kidney tissue. Lane 2: Mouse brain tissue. Secondary. Goat polyclonal to rabbit IgG at 1/10000 dilution. Predicted band size: 81, 75, 72 kDa. Observed band size: 81 kDa.



Immunohistochemistry of paraffin-embedded human placenta tissue using PACO44174 at dilution of 1:100.



Immunohistochemistry of paraffin-embedded human testis tissue using PACO44174 at dilution of 1:100.