

Product Information

Size:

50ul

Reactivity:

Human

Source:

Rabbit

Isotype:

IgG

Applications:

ELISA, WB, IHC

Recommended dilutions:

ELISA:1:2000-1:10000, WB:1:500-1:5000,
IHC:1:20-1:200

Protein Background:

Component of ribonuclease P, a protein complex that generates mature tRNA molecules by cleaving their 5'-ends. Also a component of RNase MRP complex, which cleaves pre-rRNA sequences.

Gene ID:

POP7

Uniprot

O75817

Synonyms:

Ribonuclease P protein subunit p20 (RNaseP protein p20) (EC 3.1.26.5) (Ribonucleases P/MRP protein subunit POP7 homolog) (hPOP7), POP7, RPP20

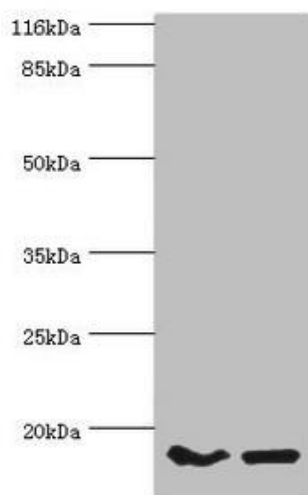
Immunogen:

Recombinant Human Ribonuclease P protein subunit p20 protein (1-140AA).

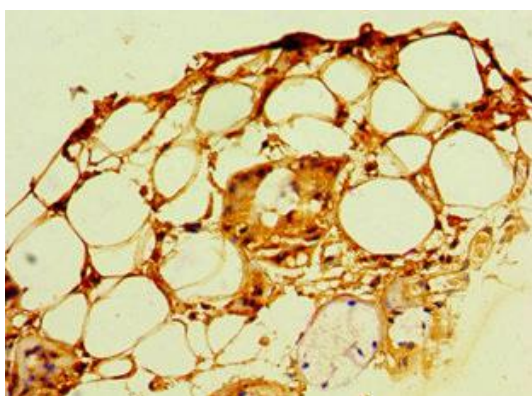
Storage:

PBS with 0.02% sodium azide, 50% glycerol, pH7.3.

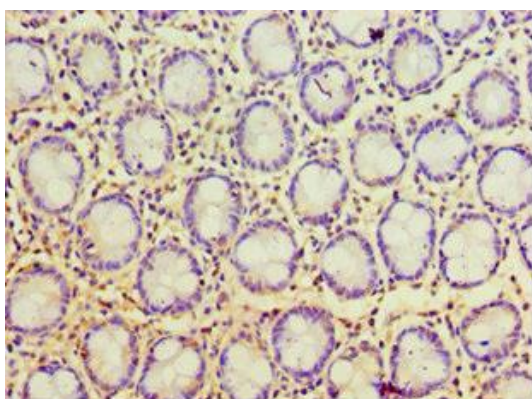
Product Images



Western blot. All lanes: POP7 antibody at 10 μ g/ml. Lane 1: HeLa whole cell lysate. Lane 2: HepG2 whole cell lysate. Secondary: Goat polyclonal to rabbit IgG at 1/10000 dilution. Predicted band size: 16 kDa. Observed band size: 16 kDa.



Immunohistochemistry of paraffin-embedded human trachea tissue using PACO44171 at dilution of 1:100.



Immunohistochemistry of paraffin-embedded human colon tissue using PACO44171 at dilution of 1:100.