

PACO44163

Product Information

Size:

50ul

Reactivity:

Human

Source:

Rabbit

Isotype:

IgG

Applications:

ELISA, IHC

Recommended dilutions:

ELISA:1:2000-1:10000, IHC:1:20-1:200

Protein Background:

Sulfotransferase that utilizes 3'-phospho-5'-adenylyl sulfate (PAPS) as sulfonate donor to catalyze the sulfate conjugation of drugs, xenobiotic compounds, hormones, and neurotransmitters. May be involved in the activation of carcinogenic hydroxylamines. Shows activity towards p-nitrophenol and N-hydroxy-2-acetylamino-fluorene (N-OH-2AAF).

Gene ID:

SULT1C2

Uniprot

O00338

Synonyms:

Sulfotransferase 1C2 (ST1C2) (EC 2.8.2. -) (Sulfotransferase 1C1) (SULT1C#1) (humSULTC2), SULT1C2, SULT1C1

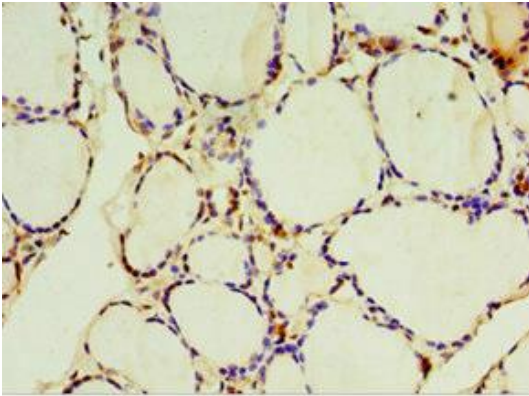
Immunogen:

Recombinant Human Sulfotransferase 1C2 protein (1-120AA).

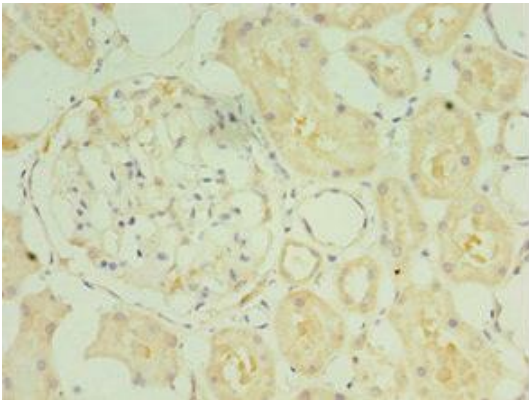
Storage:

PBS with 0.02% sodium azide, 50% glycerol, pH7.3.

Product Images



Immunohistochemistry of paraffin-embedded human thyroid tissue using PACO44163 at dilution of 1:100.



Immunohistochemistry of paraffin-embedded human kidney tissue using PACO44163 at dilution of 1:100.