

Product Information

Size:

50ul

Reactivity:

Human

Source:

Rabbit

Isotype:

IgG

Applications:

ELISA, IHC

Recommended dilutions:

ELISA:1:2000-1:10000, IHC:1:20-1:200

Protein Background:

Transcriptional activator that binds to DNA sequences containing the consensus 5'-WGGA-3'. Transactivates promoters of the hematopoietic growth factor genes CSF2, IL3, IL8, and of the bovine lysozyme gene. Acts synergistically with RUNX1 to transactivate the IL3 promoter. Also transactivates the PRF1 promoter in natural killer (NK) cells. Plays a role in the development and function of NK and NK T-cells and in innate immunity. Controls the proliferation and homing of CD8+ T-cells via the Kruppel-like factors KLF4 and KLF2. Controls cell senescence in a p53-dependent manner. Can also promote cellular transformation through inhibition of the p16 pathway.

Gene ID:

ELF4

Uniprot

Q99607

Synonyms:

ETS-related transcription factor Elf-4 (E74-like factor 4) (Myeloid Elf-1-like factor), ELF4, ELFR MEF

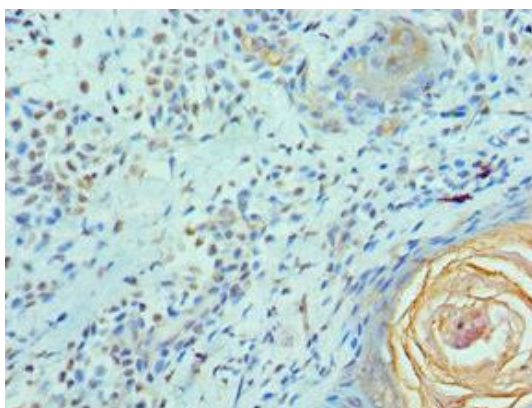
Immunogen:

Recombinant Human ETS-related transcription factor Elf-4 protein (1-200AA).

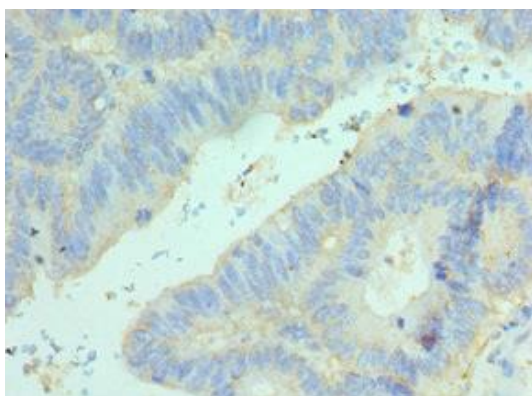
Storage:

PBS with 0.02% sodium azide, 50% glycerol, pH7.3.

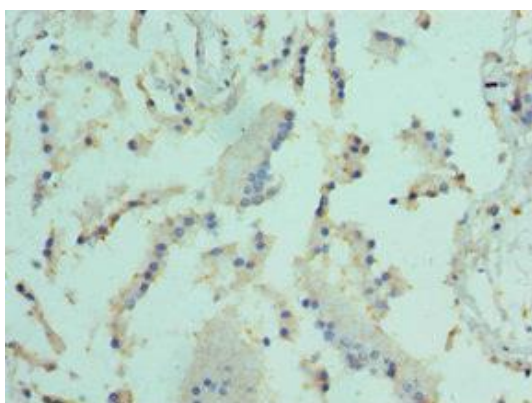
Product Images



Immunohistochemistry of paraffin-embedded human breast cancer using PACO44157 at dilution of 1:100.



Immunohistochemistry of paraffin-embedded human colon cancer using PACO44157 at dilution of 1:100.



Immunohistochemistry of paraffin-embedded human prostate tissue using PACO44157 at dilution of 1:100.