

Product Information

Size:

50ul

Reactivity:

Human

Source:

Rabbit

Isotype:

IgG

Applications:

ELISA, WB, IHC

Recommended dilutions:

ELISA:1:2000-1:10000, WB:1:500-1:2000,
IHC:1:20-1:200

Protein Background:

Required for the control of apoptosis during postnatal growth. Essential for proteolytic processing of an antiapoptotic form of OPA1 which prevents the release of mitochondrial cytochrome c in response to intrinsic apoptotic signals. Promotes changes in mitochondria morphology regulated by phosphorylation of P-beta domain.

Gene ID:

PARL

Uniprot

Q9H300

Synonyms:

Presenilins-associated rhomboid-like protein, mitochondrial (EC 3.4.21.105)
(Mitochondrial intramembrane cleaving protease PARL) [Cleaved into: P-beta (Pbeta)],
PARL, PSARL

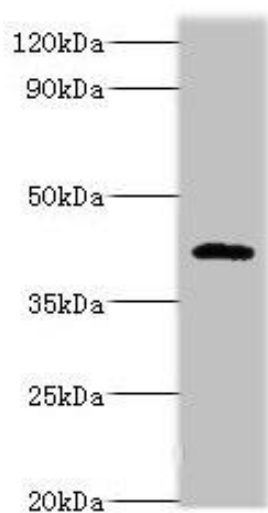
Immunogen:

Recombinant Human Presenilins-associated rhomboid-like protein, mitochondrial protein (1-170AA).

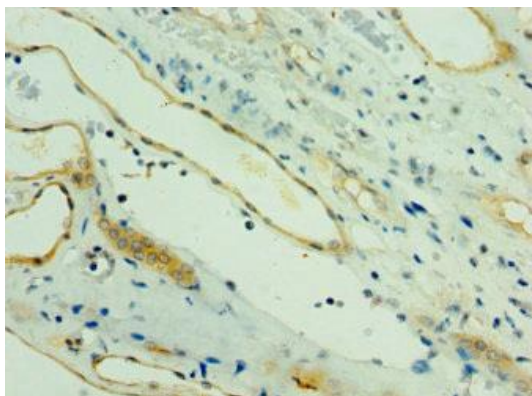
Storage:

PBS with 0.02% sodium azide, 50% glycerol, pH7.3.

Product Images



Western blot. All lanes: PARL antibody at 6 μ g/ml + NIH/3T3 whole cell lysate. Secondary. Goat polyclonal to rabbit IgG at 1/10000 dilution. Predicted band size: 43, 37 kDa. Observed band size: 47 kDa.



Immunohistochemistry of paraffin-embedded human kidney tissue using PACO44148 at dilution of 1:100.