

TUBGCP3 Antibody



PACO44091

Product Information

Size:

50ul

Reactivity:

Human

Source:

Rabbit

Isotype:

IgG

Applications:

ELISA, IHC

Recommended dilutions:

ELISA:1:2000-1:10000, IHC:1:20-1:200

Protein Background:

Gamma-tubulin complex is necessary for microtubule nucleation at the centrosome.

Gene ID:

TUBGCP3

Uniprot

Q96CW5

Synonyms:

Gamma-tubulin complex component 3 (GCP-3) (hGCP3) (Gamma-ring complex protein 104 kDa) (h104p) (hGrip104) (Spindle pole body protein Spc98 homolog) (hSpc98), TUBGCP3, GCP3

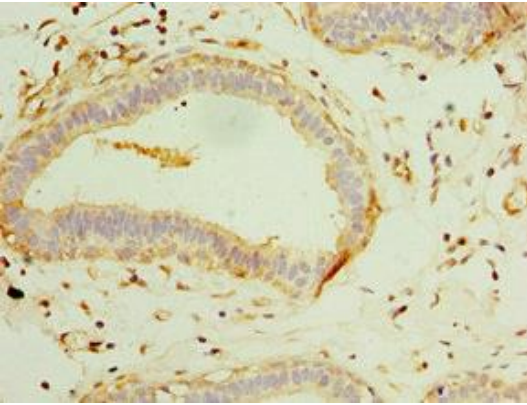
Immunogen:

Recombinant Human Gamma-tubulin complex component 3 protein (1-250AA).

Storage:

PBS with 0.02% sodium azide, 50% glycerol, pH7.3.

Product Images



Immunohistochemistry of paraffin-embedded human breast cancer using PACO44091 at dilution of 1:100.