

PACO44064

Product Information

Size:

50ul

Reactivity:

Human

Source:

Rabbit

Isotype:

IgG

Applications:

ELISA, WB

Recommended dilutions:

ELISA:1:2000-1:10000, WB:1:500-1:5000

Protein Background:

Plays a role in the translocation of transport vesicles from the cytoplasm to the plasma membrane. Inhibits the translocation of SLC2A4 from intracellular vesicles to the plasma membrane by STX4A binding and preventing the interaction between STX4A and VAMP2. Stimulation with insulin disrupts the interaction with STX4A, leading to increased levels of SLC2A4 at the plasma membrane. May also play a role in the regulation of insulin release by pancreatic beta cells after stimulation by glucose.

Gene ID:

STXBP4

Uniprot

Q6ZWJ1

Synonyms:

Syntaxin-binding protein 4 (Syntaxin 4-interacting protein) (STX4-interacting protein) (Synip), STXBP4

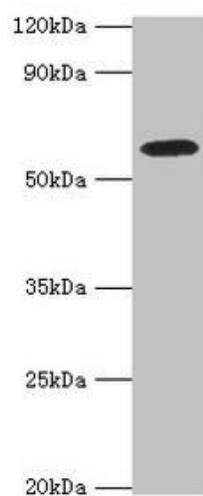
Immunogen:

Recombinant Human Syntaxin-binding protein 4 protein (344-553AA).

Storage:

PBS with 0.02% sodium azide, 50% glycerol, pH7.3.

Product Images



Western blot. All lanes: STXBP4 antibody at 10 μ g/ml + PC-3 whole cell lysate. Secondary. Goat polyclonal to rabbit IgG at 1/10000 dilution. Predicted band size: 62, 27 kDa. Observed band size: 62 kDa.