

# AHCYL1 Antibody



PACO44058

---

## Product Information

**Size:**

50ul

**Reactivity:**

Human

**Source:**

Rabbit

**Isotype:**

IgG

**Applications:**

ELISA, WB, IHC

**Recommended dilutions:**

ELISA:1:2000-1:10000, WB:1:500-1:2000,  
IHC:1:20-1:200

**Protein Background:****Gene ID:**

AHCYL1

**Uniprot**

O43865

**Synonyms:**

S-adenosylhomocysteine hydrolase-like protein 1 (DC-expressed AHCY-like molecule) (IP(3)Rs binding protein released with IP(3)) (IRBIT) (Putative adenosylhomocysteinase 2) (S-adenosyl-L-homocysteine hydrolase 2) (AdoHcyase 2), AHCYL1, DCAL IRBIT XPVKONA

**Immunogen:**

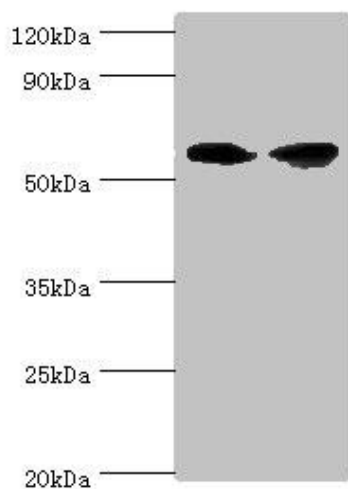
Recombinant Human S-adenosylhomocysteine hydrolase-like protein 1 protein (31-260AA).

**Storage:**

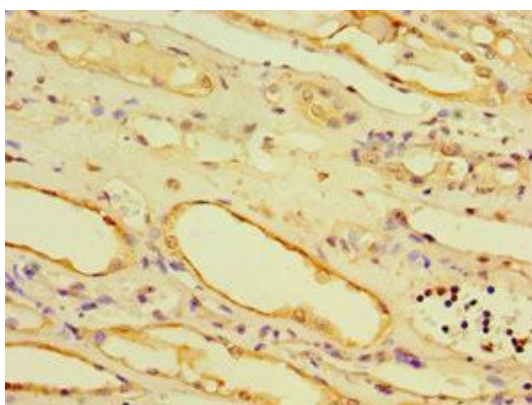
PBS with 0.02% sodium azide, 50% glycerol, pH7.3.

## Product Images

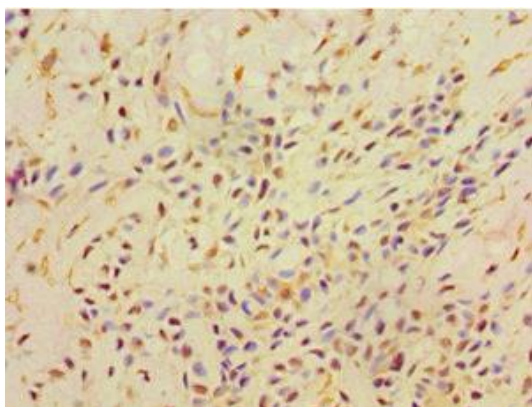
---



Western blot. All lanes: AHCYL1 antibody at 12 $\mu$ g/ml. Lane 1: HeLa whole cell lysate. Lane 2: 293T whole cell lysate. Secondary: Goat polyclonal to rabbit IgG at 1/10000 dilution. Predicted band size: 59, 54 kDa. Observed band size: 59 kDa.



Immunohistochemistry of paraffin-embedded human kidney tissue using PACO44058 at dilution of 1:100.



Immunohistochemistry of paraffin-embedded human breast cancer using PACO44058 at dilution of 1:100.