

# SLC4A2 Antibody



PACO44053

---

## Product Information

**Size:**

50ul

**Reactivity:**

Human

**Source:**

Rabbit

**Isotype:**

IgG

**Applications:**

ELISA, IHC

**Recommended dilutions:**

ELISA:1:2000-1:10000, IHC:1:20-1:200

**Protein Background:**

Plasma membrane anion exchange protein of wide distribution.

**Gene ID:**

SLC4A2

**Uniprot**

P04920

**Synonyms:**

Anion exchange protein 2 (AE 2) (Anion exchanger 2) (Non-erythroid band 3-like protein) (BND3L) (Solute carrier family 4 member 2), SLC4A2, AE2 EPB3L1 HKB3 MPB3L

**Immunogen:**

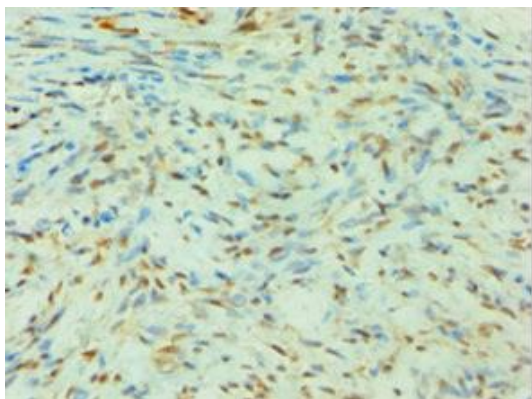
Recombinant Human Anion exchange protein 2 protein (95-245AA).

**Storage:**

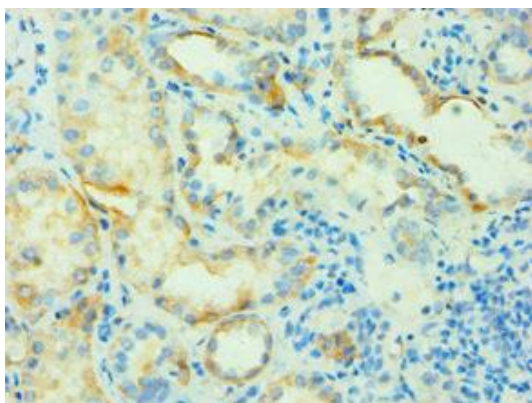
PBS with 0.02% sodium azide, 50% glycerol, pH7.3.

## Product Images

---



Immunohistochemistry of paraffin-embedded human breast cancer using PACO44053 at dilution of 1:100.



Immunohistochemistry of paraffin-embedded human kidney tissue using PACO44053 at dilution of 1:100.