

MLANA Antibody



PACO44031

Product Information

Size:

50ul

Reactivity:

Human

Source:

Rabbit

Isotype:

IgG

Applications:

ELISA, IHC, IF

Recommended dilutions:

ELISA:1:2000-1:10000, IHC:1:20-1:200,
IF:1:50-1:200

Protein Background:

Involved in melanosome biogenesis by ensuring the stability of GPR143. Plays a vital role in the expression, stability, trafficking, and processing of melanocyte protein PMEL, which is critical to the formation of stage II melanosomes.

Gene ID:

MLANA

Uniprot

Q16655

Synonyms:

Melanoma antigen recognized by T-cells 1 (MART-1) (Antigen LB39-AA) (Antigen SK29-AA) (Protein Melan-A), MLANA, MART1

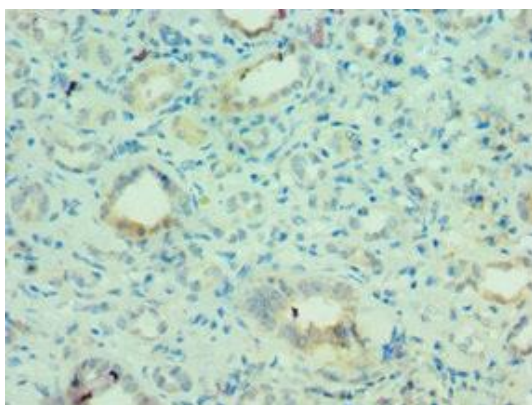
Immunogen:

Recombinant Human Melanoma antigen recognized by T-cells 1 protein (48-118AA).

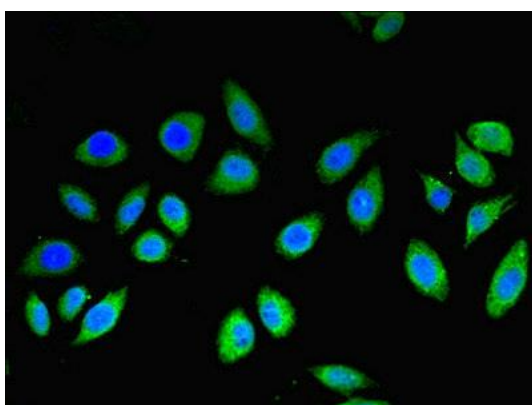
Storage:

PBS with 0.02% sodium azide, 50% glycerol, pH7.3.

Product Images



Immunohistochemistry of paraffin-embedded human kidney tissue using PACO44031 at dilution of 1:100.



Immunofluorescent analysis of A549 cells using PACO44031 at dilution of 1:100 and Alexa Fluor 488-conjugated AffiniPure Goat Anti-Rabbit IgG(H+L).