

MAPK15 Antibody



PACO44012

Product Information

Size:

50ul

Reactivity:

Human

Source:

Rabbit

Isotype:

IgG

Applications:

ELISA, WB, IHC

Recommended dilutions:

ELISA:1:2000-1:10000, WB:1:500-1:5000,
IHC:1:20-1:200

Protein Background:

In vitro, phosphorylates MBP.

Gene ID:

MAPK15

Uniprot

Q8TD08

Synonyms:

Mitogen-activated protein kinase 15 (MAP kinase 15) (MAPK 15) (EC 2.7.11.24)
(Extracellular signal-regulated kinase 7) (ERK-7) (Extracellular signal-regulated kinase 8)
(ERK-8), MAPK15, ERK7 ERK8

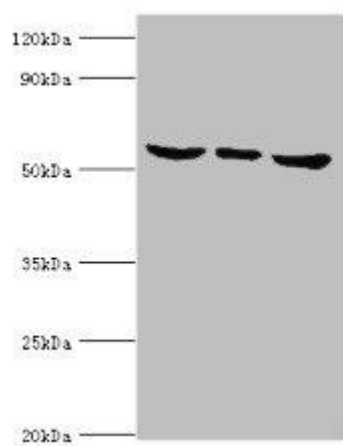
Immunogen:

Recombinant Human Mitogen-activated protein kinase 15 protein (1-95AA).

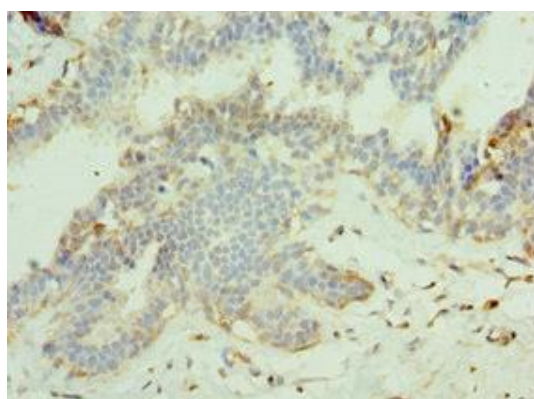
Storage:

PBS with 0.02% sodium azide, 50% glycerol, pH7.3.

Product Images



Western blot. All lanes: MAPK15 antibody at 6 μ g/ml. Lane 1: HeLa whole cell lysate. Lane 2: MCF-7 whole cell lysate. Lane 3: HepG2 whole cell lysate. Secondary. Goat polyclonal to rabbit IgG at 1/10000 dilution. Predicted band size: 60, 29, 32 kDa. Observed band size: 60 kDa.



Immunohistochemistry of paraffin-embedded human breast cancer using PACO44012 at dilution of 1:100.