

# ATAD3B Antibody



PACO44011

---

## Product Information

**Size:**

50ul

**Reactivity:**

Human

**Source:**

Rabbit

**Isotype:**

IgG

**Applications:**

ELISA, WB, IHC, IF

**Recommended dilutions:**

ELISA:1:2000-1:10000, WB:1:500-1:5000,  
IHC:1:20-1:200, IF:1:50-1:200

**Protein Background:**

May play a role in a mitochondrial network organization typical for stem cells, characterized by reduced mitochondrial metabolism, low mtDNA copies and fragmented mitochondrial network. may act by suppressing ATAD3A function, interfering with ATAD3A interaction with matrix nucleoid complexes.

**Gene ID:**

ATAD3B

**Uniprot**

Q5T9A4

**Synonyms:**

ATPase family AAA domain-containing protein 3B (AAA-TOB3), ATAD3B, KIAA1273  
TOB3

**Immunogen:**

Recombinant Human ATPase family AAA domain-containing protein 3B protein (1-240AA).

**Storage:**

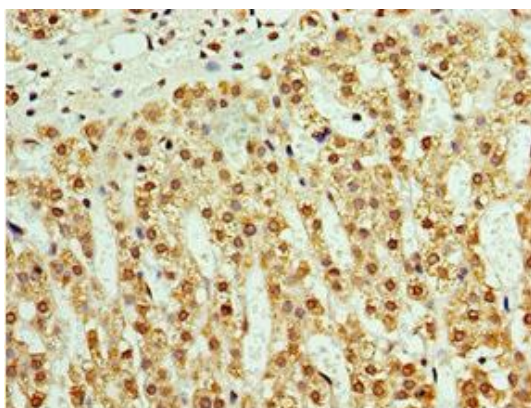
PBS with 0.02% sodium azide, 50% glycerol, pH7.3.

## Product Images

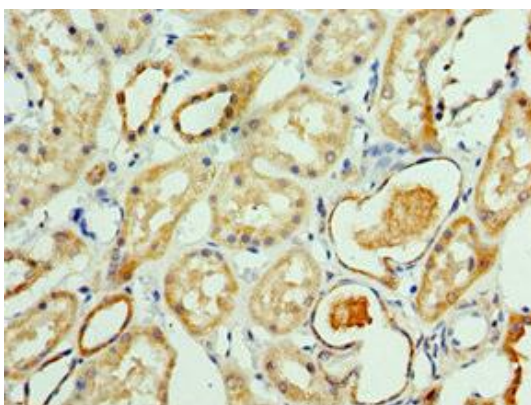
---



Western blot. All lanes: ATAD3B antibody at 2 $\mu$ g/ml. Lane 1: Jurkat whole cell lysate. Lane 2: Hela whole cell lysate. Secondary. Goat polyclonal to rabbit IgG at 1/10000 dilution. Predicted band size: 73, 20, 68 kDa. Observed band size: 73 kDa.



Immunohistochemistry of paraffin-embedded human adrenal gland tissue using PACO44011 at dilution of 1:100.



Immunohistochemistry of paraffin-embedded human kidney tissue using PACO44011 at dilution of 1:100.