

CHI3L2 Antibody



PACO43993

Product Information

Size:

50ul

Reactivity:

Human, Rat

Source:

Rabbit

Isotype:

IgG

Applications:

ELISA, WB, IHC

Recommended dilutions:

ELISA:1:2000-1:10000, WB:1:500-1:2000,
IHC:1:20-1:200

Protein Background:

Lectin that binds chitooligosaccharides and other glycans with high affinity, but not heparin. Has no chitinase activity.

Gene ID:

CHI3L2

Uniprot

Q15782

Synonyms:

Chitinase-3-like protein 2 (Chondrocyte protein 39) (YKL-39), CHI3L2

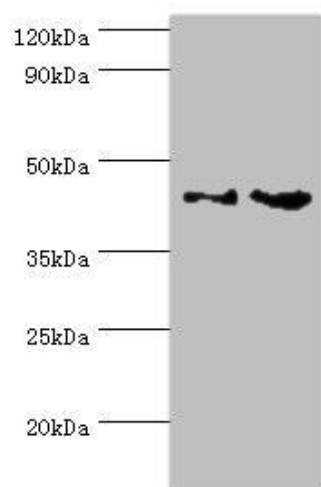
Immunogen:

Recombinant Human Chitinase-3-like protein 2 protein (27-390AA).

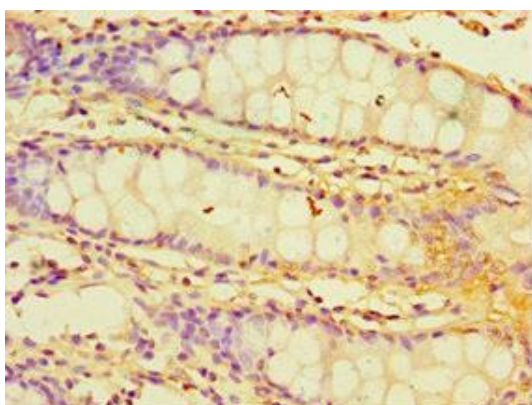
Storage:

PBS with 0.02% sodium azide, 50% glycerol, pH7.3.

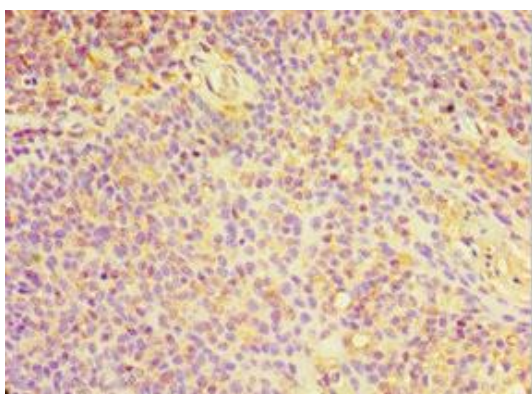
Product Images



Western blot. All lanes: CHI3L2 antibody at 4 μ g/ml. Lane 1: Rat brain tissue. Lane 2: A431 whole cell lysate. Secondary. Goat polyclonal to rabbit IgG at 1/10000 dilution. Predicted band size: 44, 35, 43 kDa. Observed band size: 44 kDa.



Immunohistochemistry of paraffin-embedded human colon tissue using PACO43993 at dilution of 1:100.



Immunohistochemistry of paraffin-embedded human tonsil tissue using PACO43993 at dilution of 1:100.