

SLC39A6 Antibody



PACO43985

Product Information

Size:

50ul

Reactivity:

Human

Source:

Rabbit

Isotype:

IgG

Applications:

ELISA, WB, IHC

Recommended dilutions:

ELISA:1:2000-1:10000, WB:1:500-1:2000,
IHC:1:20-1:200

Protein Background:

May act as a zinc-influx transporter.

Gene ID:

SLC39A6

Uniprot

Q13433

Synonyms:

Zinc transporter ZIP6 (Estrogen-regulated protein LIV-1) (Solute carrier family 39 member 6) (Zrt- and Irt-like protein 6) (ZIP-6), SLC39A6, LIV1 ZIP6

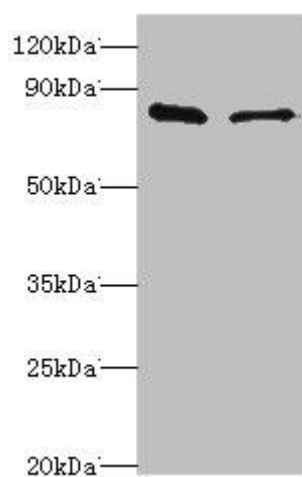
Immunogen:

Recombinant Human Zinc transporter ZIP6 protein (170-320AA).

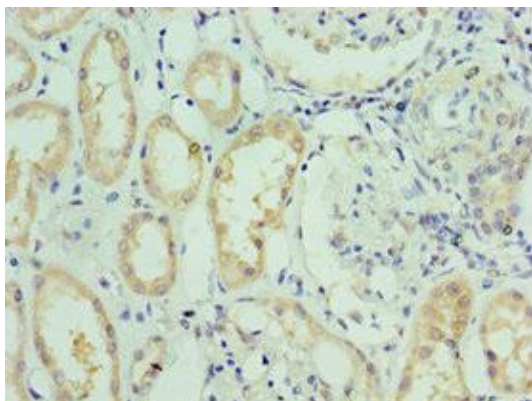
Storage:

PBS with 0.02% sodium azide, 50% glycerol, pH7.3.

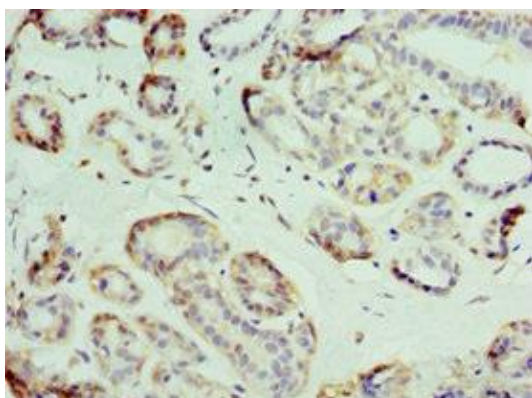
Product Images



Western blot. All lanes: SLC39A6 antibody at 10 μ g/ml. Lane 1: HeLa whole cell lysate. Lane 2: 293T whole cell lysate. Secondary. Goat polyclonal to rabbit IgG at 1/10000 dilution. Predicted band size: 86, 49 kDa. Observed band size: 86 kDa.



Immunohistochemistry of paraffin-embedded human kidney tissue using PACO43985 at dilution of 1:100.



Immunohistochemistry of paraffin-embedded human breast cancer using PACO43985 at dilution of 1:100.