

SLC39A6 Antibody



PACO43984

Product Information

Size:

50ul

Reactivity:

Human

Source:

Rabbit

Isotype:

IgG

Applications:

ELISA, IHC

Recommended dilutions:

ELISA:1:2000-1:10000, IHC:1:20-1:200

Protein Background:

May act as a zinc-influx transporter.

Gene ID:

SLC39A6

Uniprot

Q13433

Synonyms:

Zinc transporter ZIP6 (Estrogen-regulated protein LIV-1) (Solute carrier family 39 member 6) (Zrt- and Irt-like protein 6) (ZIP-6), SLC39A6, LIV1 ZIP6

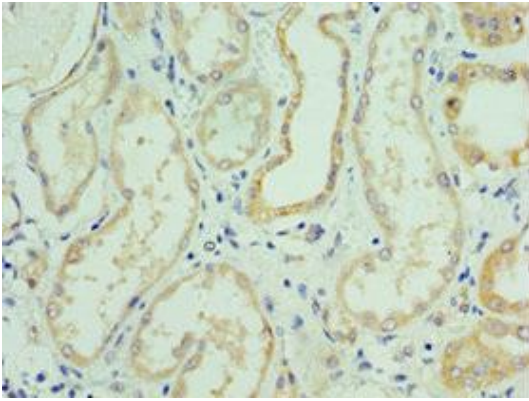
Immunogen:

Recombinant Human Zinc transporter ZIP6 protein (170-320AA).

Storage:

PBS with 0.02% sodium azide, 50% glycerol, pH7.3.

Product Images



Immunohistochemistry of paraffin-embedded human kidney tissue using PACO43984 at dilution of 1:100.