

# STX11 Antibody



PACO43980

---

## Product Information

**Size:**

50ul

**Reactivity:**

Human, Mouse

**Source:**

Rabbit

**Isotype:**

IgG

**Applications:**

ELISA, WB, IHC

**Recommended dilutions:**

ELISA:1:2000-1:10000, WB:1:500-1:2000,  
IHC:1:20-1:200

**Protein Background:**

SNARE that acts to regulate protein transport between late endosomes and the trans-Golgi network.

**Gene ID:**

STX11

**Uniprot**

O75558

**Synonyms:**

Syntaxin-11, STX11

**Immunogen:**

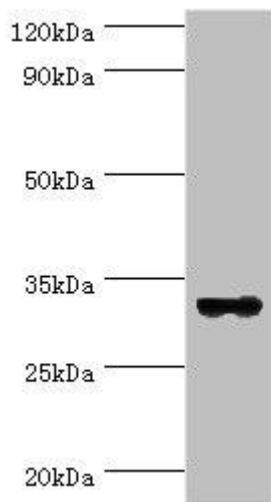
Recombinant Human Syntaxin-11 protein (1-287AA).

**Storage:**

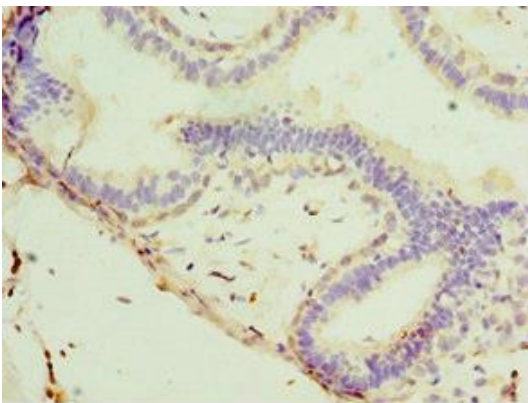
PBS with 0.02% sodium azide, 50% glycerol, pH7.3.

## Product Images

---



Western blot. All lanes: STX11 antibody at 6 $\mu$ g/ml + Mouse skeletal muscle tissue. Secondary. Goat polyclonal to rabbit IgG at 1/10000 dilution. Predicted band size: 33 kDa. Observed band size: 33 kDa.



Immunohistochemistry of paraffin-embedded human breast cancer using PACO43980 at dilution of 1:100.