

PACO43939

---

## Product Information

**Size:**

50ul

**Reactivity:**

Human

**Source:**

Rabbit

**Isotype:**

IgG

**Applications:**

ELISA, WB, IHC, IP

**Recommended dilutions:**

ELISA:1:2000-1:10000, WB:1:1000-1:5000,  
IHC:1:20-1:200, IP:1:200-1:2000

**Protein Background:**

Inhibitor of the caspase-activated DNase (DFF40).

**Gene ID:**

DFFA

**Uniprot**

O00273

**Synonyms:**

DNA fragmentation factor subunit alpha (DNA fragmentation factor 45 kDa subunit) (DFF-45) (Inhibitor of CAD) (ICAD), DFFA, DFF1 DFF45

**Immunogen:**

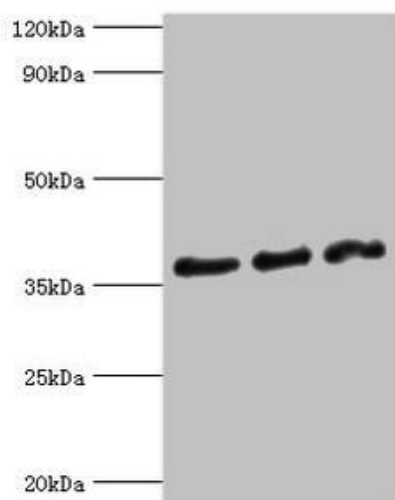
Recombinant Human DNA fragmentation factor subunit &alpha; protein (1-331AA).

**Storage:**

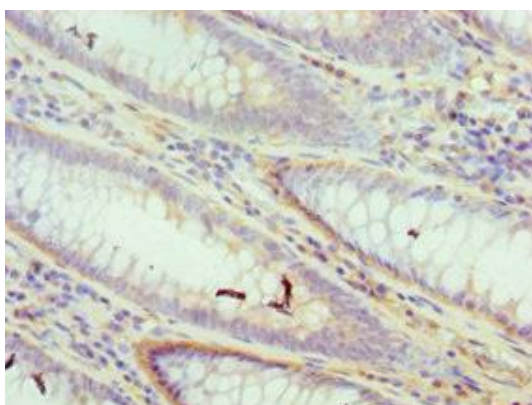
PBS with 0.02% sodium azide, 50% glycerol, pH7.3.

## Product Images

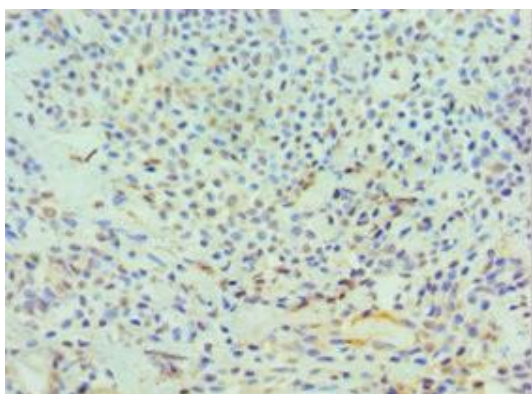
---



Western blot. All lanes: DFFA antibody at 10 $\mu$ g/ml. Lane 1: HeLa whole cell lysate. Lane 2: 293T whole cell lysate. Lane 3: PC-3 whole cell lysate. Secondary. Goat polyclonal to rabbit IgG at 1/10000 dilution. Predicted band size: 37, 30 kDa. Observed band size: 37 kDa.



Immunohistochemistry of paraffin-embedded human colon cancer using PACO43939 at dilution of 1:100.



Immunohistochemistry of paraffin-embedded human breast cancer using PACO43939 at dilution of 1:100.