

ADAM33 Antibody



PACO43936

Product Information

Size:

50ul

Reactivity:

Human

Source:

Rabbit

Isotype:

IgG

Applications:

ELISA, WB, IHC

Recommended dilutions:

ELISA:1:2000-1:10000, WB:1:500-1:2000,
IHC:1:20-1:200

Protein Background:**Gene ID:**

ADAM33

Uniprot

Q9BZ11

Synonyms:

Disintegrin and metalloproteinase domain-containing protein 33 (ADAM 33) (EC 3.4.24.-), ADAM33, C20orf153

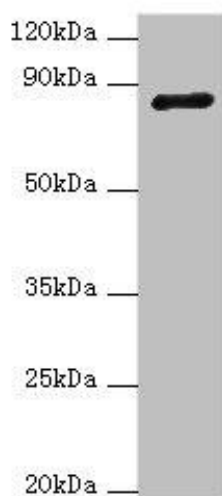
Immunogen:

Recombinant Human Disintegrin and metalloproteinase domain-containing protein 33 protein (140-420AA).

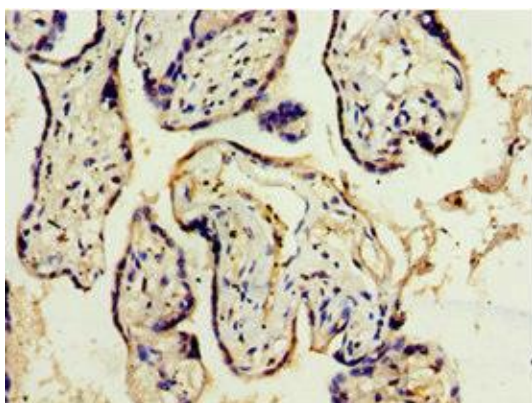
Storage:

PBS with 0.02% sodium azide, 50% glycerol, pH7.3.

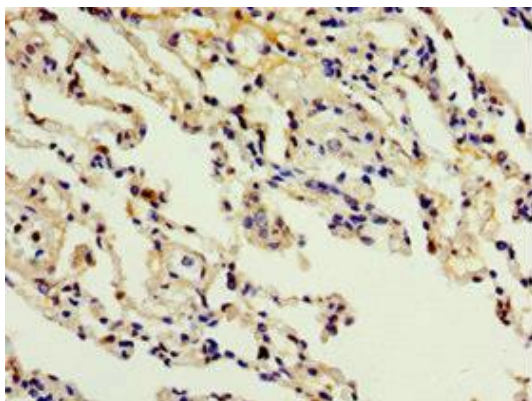
Product Images



Western blot. All lanes: ADAM33 antibody at 4 μ g/ml + NIH/3T3 whole cell lysate. Secondary. Goat polyclonal to rabbit IgG at 1/10000 dilution. Predicted band size: 88, 85, 33 kDa. Observed band size: 88 kDa.



Immunohistochemistry of paraffin-embedded human placenta tissue using PACO43936 at dilution of 1:100.



Immunohistochemistry of paraffin-embedded human lung tissue using PACO43936 at dilution of 1:100.