

PACO43934

---

## Product Information

**Size:**

50ul

**Reactivity:**

Human

**Source:**

Rabbit

**Isotype:**

IgG

**Applications:**

ELISA, IHC

**Recommended dilutions:**

ELISA:1:2000-1:10000, IHC:1:20-1:200

**Protein Background:**

Component of the CENPA-CAD (nucleosome distal) complex, a complex recruited to centromeres which is involved in assembly of kinetochore proteins, mitotic progression and chromosome segregation. May be involved in incorporation of newly synthesized CENPA into centromeres via its interaction with the CENPA-NAC complex.

**Gene ID:**

CENPQ

**Uniprot**

Q7L2Z9

**Synonyms:**

Centromere protein Q (CENP-Q), CENPQ, C6orf139

**Immunogen:**

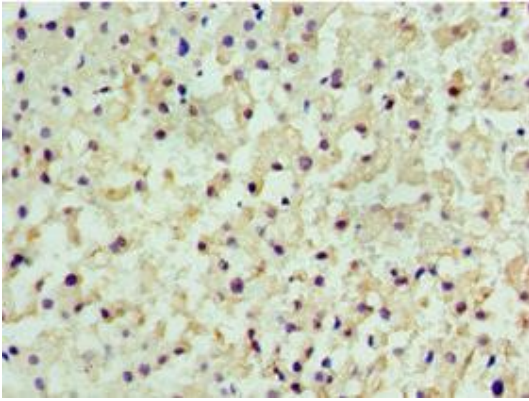
Recombinant Human Centromere protein Q protein (131-268AA).

**Storage:**

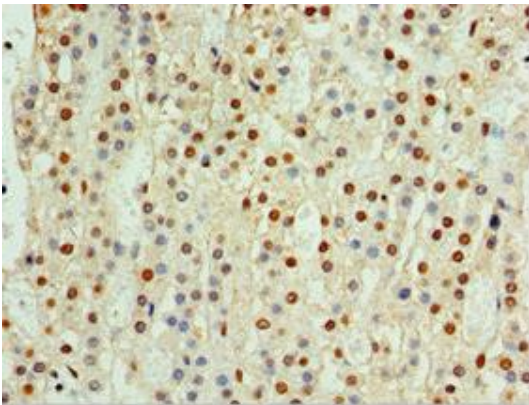
PBS with 0.02% sodium azide, 50% glycerol, pH7.3.

## Product Images

---



Immunohistochemistry of paraffin-embedded human liver cancer using PACO43934 at dilution of 1:100.



Immunohistochemistry of paraffin-embedded human adrenal gland tissue using PACO43934 at dilution of 1:100.