

PACO43933

Product Information

Size:

50ul

Reactivity:

Human

Source:

Rabbit

Isotype:

IgG

Applications:

ELISA, IHC

Recommended dilutions:

ELISA:1:2000-1:10000, IHC:1:20-1:200

Protein Background:

Cyclin-dependent kinase that phosphorylates the transcription factor ETS2 (in vitro) and positively controls its proteasomal degradation (in cells).

Gene ID:

CDK10

Uniprot

Q15131

Synonyms:

Cyclin-dependent kinase 10 (EC 2.7.11.22) (Cell division protein kinase 10) (Serine/threonine-protein kinase PISLRE), CDK10

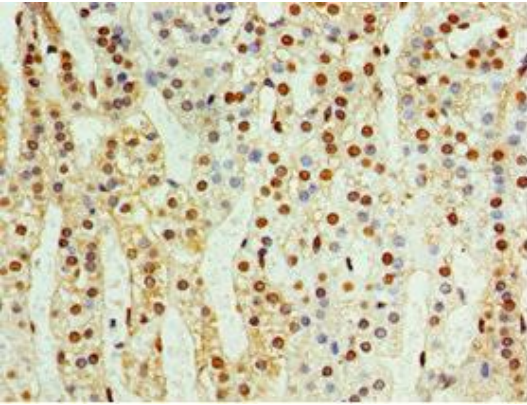
Immunogen:

Recombinant Human Cyclin-dependent kinase 10 protein (1-283AA).

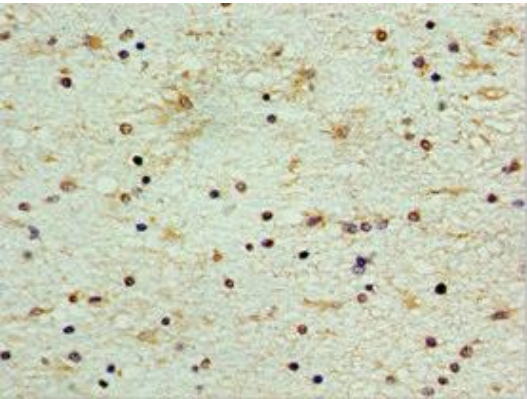
Storage:

PBS with 0.02% sodium azide, 50% glycerol, pH7.3.

Product Images



Immunohistochemistry of paraffin-embedded human adrenal gland tissue using PACO43933 at dilution of 1:100.



Immunohistochemistry of paraffin-embedded human brain tissue using PACO43933 at dilution of 1:100.