

PACO43930

Product Information

Size:

50ul

Reactivity:

Human

Source:

Rabbit

Isotype:

IgG

Applications:

ELISA, IHC

Recommended dilutions:

ELISA:1:2000-1:10000, IHC:1:20-1:200

Protein Background:

Endogenous F1F(o)-ATPase inhibitor limiting ATP depletion when the mitochondrial membrane potential falls below a threshold and the F1F(o)-ATP synthase starts hydrolyzing ATP to pump protons out of the mitochondrial matrix. Required to avoid the consumption of cellular ATP when the F1F(o)-ATP synthase enzyme acts as an ATP hydrolase. Indirectly acts as a regulator of heme synthesis in erythroid tissues: regulates heme synthesis by modulating the mitochondrial pH and redox potential, allowing FECH to efficiently catalyze the incorporation of iron into protoporphyrin IX to produce heme.

Gene ID:

ATPIF1

Uniprot

Q9UII2

Synonyms:

ATPase inhibitor, mitochondrial (Inhibitor of F(1)F(o)-ATPase) (IF(1)) (IF1), ATPIF1, ATPI

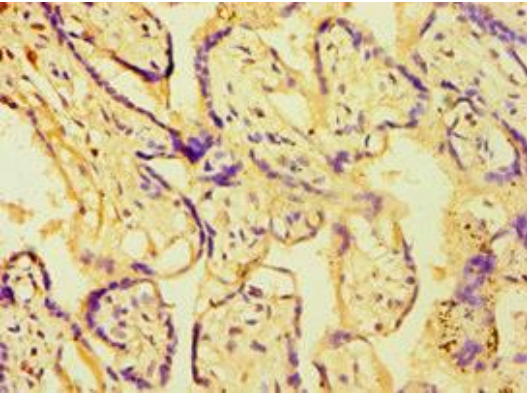
Immunogen:

Recombinant Human ATPase inhibitor, mitochondrial protein (26-106AA).

Storage:

PBS with 0.02% sodium azide, 50% glycerol, pH7.3.

Product Images



Immunohistochemistry of paraffin-embedded human placenta tissue using PACO43930 at dilution of 1:100.