

## Product Information

**Size:**

50ul

**Reactivity:**

Human

**Source:**

Rabbit

**Isotype:**

IgG

**Applications:**

ELISA, WB, IHC

**Recommended dilutions:**

ELISA:1:2000-1:10000, WB:1:500-1:2000,  
IHC:1:20-1:200

**Protein Background:**

Component of the transcription factor SL1/TIF-IB complex, which is involved in the assembly of the PIC (preinitiation complex) during RNA polymerase I-dependent transcription. The rate of PIC formation probably is primarily dependent on the rate of association of SL1/TIF-IB with the rDNA promoter. SL1/TIF-IB is involved in stabilization of nucleolar transcription factor 1/UBTF on rDNA. Formation of SL1/TIF-IB excludes the association of TBP with TFIIID subunits. Recruits RNA polymerase I to the rRNA gene promoter via interaction with RRN3.

**Gene ID:**

TAF1C

**Uniprot**

Q15572

**Synonyms:**

TATA box-binding protein-associated factor RNA polymerase I subunit C (RNA polymerase I-specific TBP-associated factor 110 kDa) (TAFI110) (TATA box-binding protein-associated factor 1C) (TBP-associated factor 1C) (Transcription initiation factor SL1/TIF-IB subunit C), TAF1C

**Immunogen:**

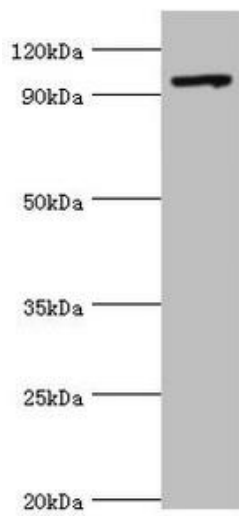
Recombinant Human TATA box-binding protein-associated factor RNA polymerase I subunit C protein (70-320AA).

**Storage:**

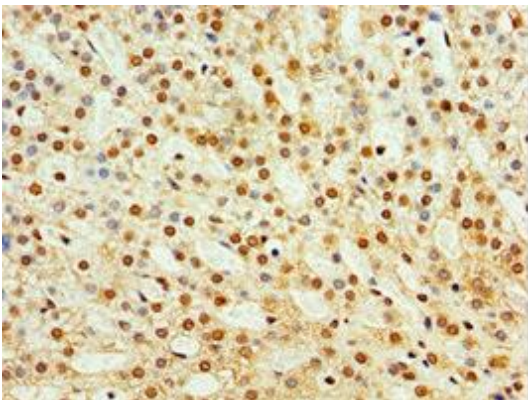
PBS with 0.02% sodium azide, 50% glycerol, pH7.3.

## Product Images

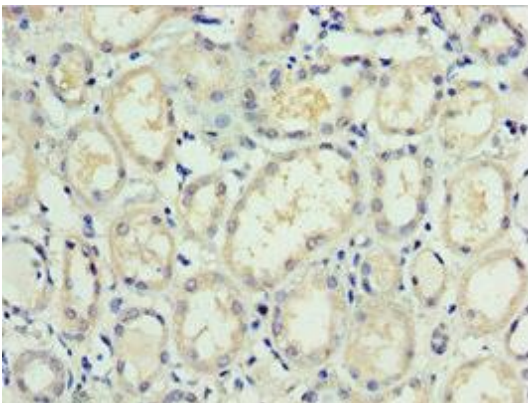
---



Western blot. All lanes: TAF1C antibody at 2 $\mu$ g/ml + 293T whole cell lysate. Secondary. Goat polyclonal to rabbit IgG at 1/10000 dilution. Predicted band size: 96, 85, 59, 50, 93 kDa. Observed band size: 96 kDa.



Immunohistochemistry of paraffin-embedded human adrenal gland tissue using PACO43925 at dilution of 1:100.



Immunohistochemistry of paraffin-embedded human kidney tissue using PACO43925 at dilution of 1:100.