

## Product Information

**Size:**

50ul

**Reactivity:**

Human, Mouse

**Source:**

Rabbit

**Isotype:**

IgG

**Applications:**

ELISA, WB, IHC

**Recommended dilutions:**

ELISA:1:2000-1:10000, WB:1:500-1:2000,  
IHC:1:20-1:200

**Protein Background:**

Component of a complex of multiple actin cross-linking proteins. Involved in the control of myofibril assembly and stability at the Z lines in muscle cells.

**Gene ID:**

MYOT

**Uniprot**

Q9UBF9

**Synonyms:**

Myotilin (57 kDa cytoskeletal protein) (Myofibrillar titin-like Ig domains protein) (Titin immunoglobulin domain protein), MYOT, TTID

**Immunogen:**

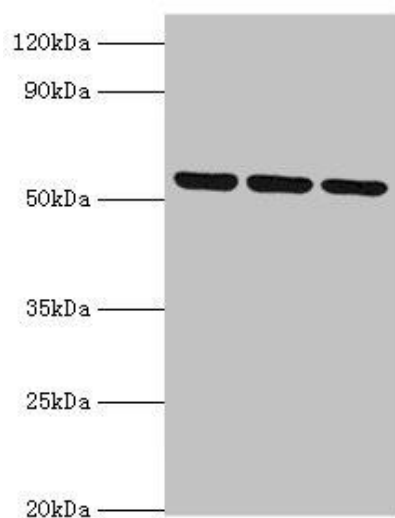
Recombinant Human Myotilin protein (443-498AA).

**Storage:**

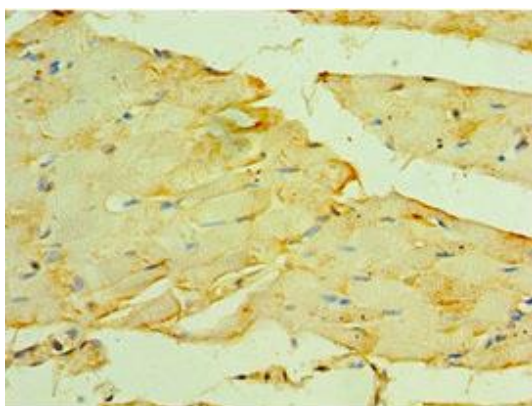
PBS with 0.02% sodium azide, 50% glycerol, pH7.3.

## Product Images

---



Western blot. All lanes: MYOT antibody at 2 $\mu$ g/ml. Lane 1: 293T whole cell lysate. Lane 2: HepG2 whole cell lysate. Lane 3: Mouse skeletal muscle tissue. Secondary. Goat polyclonal to rabbit IgG at 1/10000 dilution. Predicted band size: 56, 36 kDa. Observed band size: 56 kDa.



Immunohistochemistry of paraffin-embedded human skeletal muscle tissue using PACO43921 at dilution of 1:100.