

KLF3 Antibody



PACO43907

Product Information

Size:

50ul

Reactivity:

Human

Source:

Rabbit

Isotype:

IgG

Applications:

ELISA, IHC

Recommended dilutions:

ELISA:1:2000-1:10000, IHC:1:20-1:200

Protein Background:

Binds to the CACCC box of erythroid cell-expressed genes. May play a role in hematopoiesis.

Gene ID:

KLF3

Uniprot

P57682

Synonyms:

Krueppel-like factor 3 (Basic krueppel-like factor) (CACCC-box-binding protein BKLF) (TEF-2), KLF3, BKLF

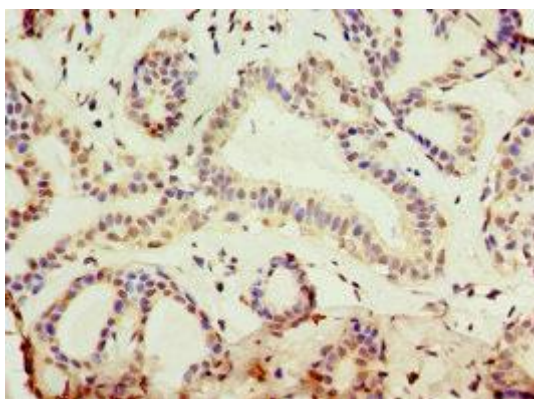
Immunogen:

Recombinant Human Krueppel-like factor 3 protein (1-240AA).

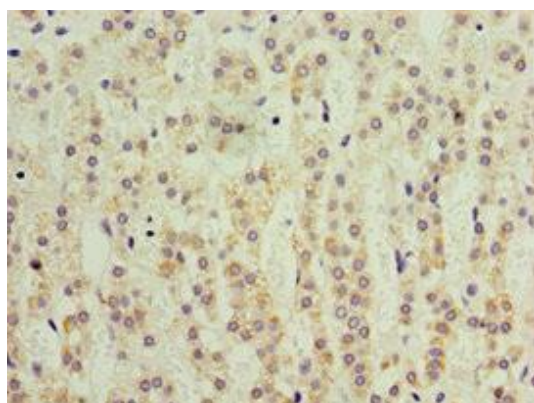
Storage:

PBS with 0.02% sodium azide, 50% glycerol, pH7.3.

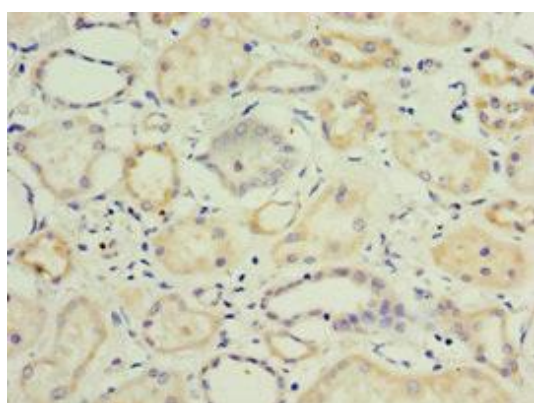
Product Images



Immunohistochemistry of paraffin-embedded human breast cancer using PACO43907 at dilution of 1:100.



Immunohistochemistry of paraffin-embedded human adrenal gland tissue using PACO43907 at dilution of 1:100.



Immunohistochemistry of paraffin-embedded human kidney tissue using PACO43907 at dilution of 1:100.