

# NXNL1 Antibody



PACO43900

---

## Product Information

**Size:**

50ul

**Reactivity:**

Human

**Source:**

Rabbit

**Isotype:**

IgG

**Applications:**

ELISA, IHC

**Recommended dilutions:**

ELISA:1:2000-1:10000, IHC:1:20-1:200

**Protein Background:**

May play a role in cone cell viability, slowing down cone degeneration, does not seem to play a role in degenerating rods.

**Gene ID:**

NXNL1

**Uniprot**

Q96CM4

**Synonyms:**

Nucleoredoxin-like protein 1 (Thioredoxin-like protein 6), NXNL1, TXNL6

**Immunogen:**

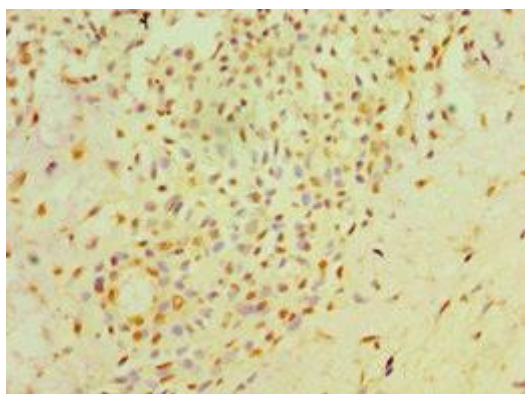
Recombinant Human Nucleoredoxin-like protein 1 protein (1-200AA).

**Storage:**

PBS with 0.02% sodium azide, 50% glycerol, pH7.3.

## Product Images

---



Immunohistochemistry of paraffin-embedded human breast cancer using PACO43900 at dilution of 1:100.