

PKD2L1 Antibody



PACO43896

Product Information

Size:

50ul

Reactivity:

Human

Source:

Rabbit

Isotype:

IgG

Applications:

ELISA, IHC

Recommended dilutions:

ELISA:1:2000-1:10000, IHC:1:20-1:200

Protein Background:

Pore-forming subunit of a ciliary calcium channel that controls calcium concentration within primary cilia without affecting cytoplasmic calcium concentration. Forms a heterodimer with PKD1L1 in primary cilia and forms a calcium-permeant ciliary channel that regulates sonic hedgehog/SHH signaling and GLI2 transcription. May act as a sour taste receptor by forming a calcium channel with PKD1L3 in gustatory cells; however, its contribution to sour taste perception is unclear in vivo and may be indirect.

Gene ID:

PKD2L1

Uniprot

Q9P0L9

Synonyms:

Polycystic kidney disease 2-like 1 protein (Polycystin-2 homolog) (Polycystin-2L1) (Polycystin-L) (Polycystin-L1), PKD2L1, PKD2L PKDL TRPP3

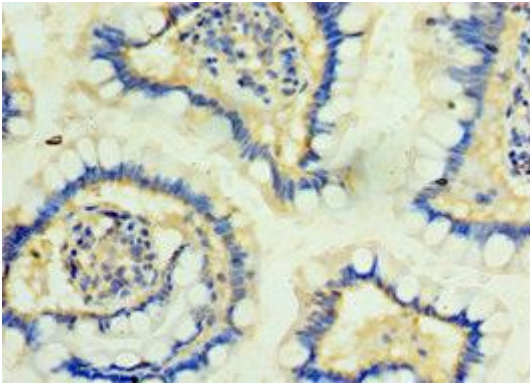
Immunogen:

Recombinant Human Polycystic kidney disease 2-like 1 protein (561-805AA).

Storage:

PBS with 0.02% sodium azide, 50% glycerol, pH7.3.

Product Images



Immunohistochemistry of paraffin-embedded human small intestine tissue using PACO43896 at dilution of 1:100.