

MSI2 Antibody



PACO43891

Product Information

Size:

50ul

Reactivity:

Human

Source:

Rabbit

Isotype:

IgG

Applications:

ELISA, IHC

Recommended dilutions:

ELISA:1:2000-1:10000, IHC:1:20-1:200

Protein Background:

RNA binding protein that regulates the expression of target mRNAs at the translation level. May play a role in the proliferation and maintenance of stem cells in the central nervous system.

Gene ID:

MSI2

Uniprot

Q96DH6

Synonyms:

RNA-binding protein Musashi homolog 2 (Musashi-2), MSI2

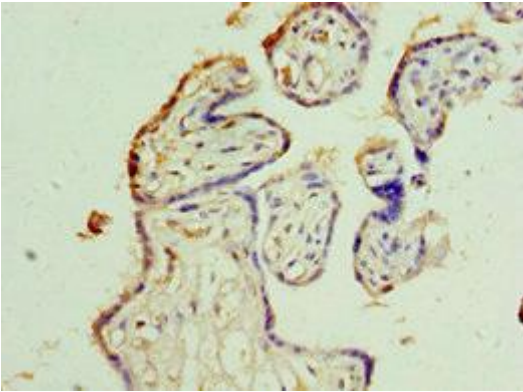
Immunogen:

Recombinant Human RNA-binding protein Musashi homolog 2 protein (1-80AA).

Storage:

PBS with 0.02% sodium azide, 50% glycerol, pH7.3.

Product Images



Immunohistochemistry of paraffin-embedded human placenta tissue using PACO43891 at dilution of 1:100.