

SLC25A15 Antibody



PACO43866

Product Information

Size:

50ul

Reactivity:

Human, Mouse

Source:

Rabbit

Isotype:

IgG

Applications:

ELISA, WB, IHC

Recommended dilutions:

ELISA:1:2000-1:10000, WB:1:500-1:2000,
IHC:1:20-1:200

Protein Background:

Ornithine transport across inner mitochondrial membrane, from the cytoplasm to the matrix.

Gene ID:

SLC25A15

Uniprot

Q9Y619

Synonyms:

Mitochondrial ornithine transporter 1 (Solute carrier family 25 member 15), SLC25A15, ORNT1

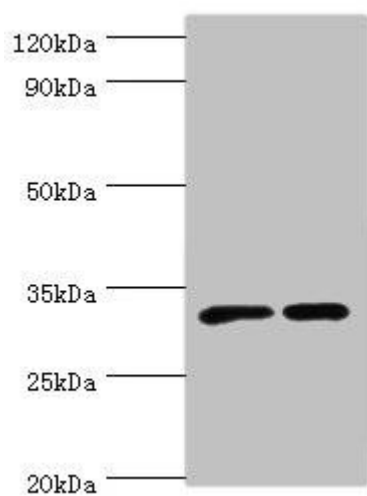
Immunogen:

Recombinant Human Mitochondrial ornithine transporter 1 protein (1-301AA).

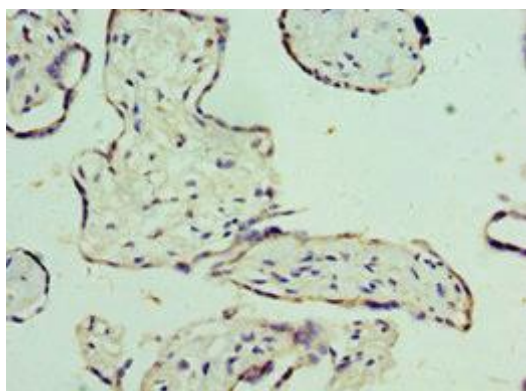
Storage:

PBS with 0.02% sodium azide, 50% glycerol, pH7.3.

Product Images



Western blot. All lanes: SLC25A15 antibody at 6 μ g/ml. Lane 1: Mouse liver tissue. Lane 2: Mouse stomach tissue. Secondary. Goat polyclonal to rabbit IgG at 1/10000 dilution. Predicted band size: 33 kDa. Observed band size: 33 kDa.



Immunohistochemistry of paraffin-embedded human placenta tissue using PACO43866 at dilution of 1:100.