

PACO43860

Product Information

Size:

50ul

Reactivity:

Human

Source:

Rabbit

Isotype:

IgG

Applications:

ELISA, WB, IHC

Recommended dilutions:

ELISA:1:2000-1:10000, WB:1:500-1:2000,
IHC:1:20-1:200

Protein Background:

Plays important functions in early cell signaling. Binds the cAMP response element (CRE) (consensus: 5'-GTGACGT[AG][AG]-3'), a sequence present in many viral and cellular promoters. Activator of the NF-ELAM1/delta-A site of the E-selectin promoter. Has no intrinsic transcriptional activity, but activates transcription on formation of JUN or FOS heterodimers. Also can bind TRE promoter sequences when heterodimerized with members of the JUN family. Isoform 4/ATF-A0 acts as a dominant repressor of the E-selectin/NF-ELAM1/delta-A promoter. Isoform 5/ATF-4 acts as a negative regulator, inhibiting both ATF2 and ATF7 transcriptional activities. It may exert these effects by sequestering in the cytoplasm the Thr-53 phosphorylating kinase, preventing activation.

Gene ID:

ATF7

Uniprot

P17544

Synonyms:

Cyclic AMP-dependent transcription factor ATF-7 (cAMP-dependent transcription factor ATF-7) (Activating transcription factor 7) (Transcription factor ATF-A), ATF7, ATFA

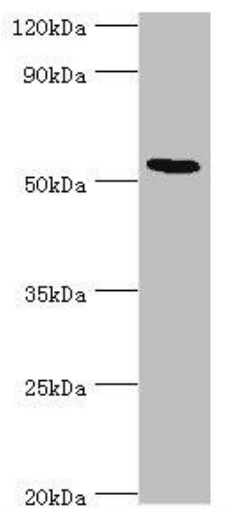
Immunogen:

Recombinant Human Cyclic AMP-dependent transcription factor ATF-7 protein (1-117AA).

Storage:

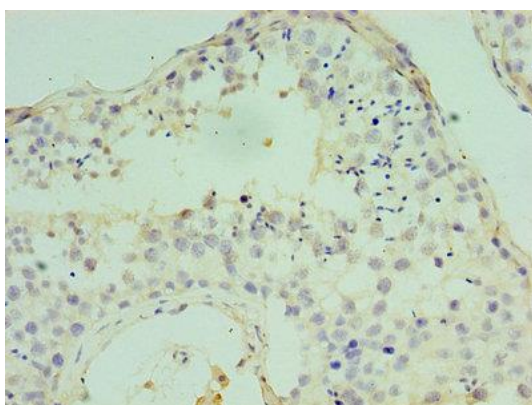
PBS with 0.02% sodium azide, 50% glycerol, pH7.3.

Product Images

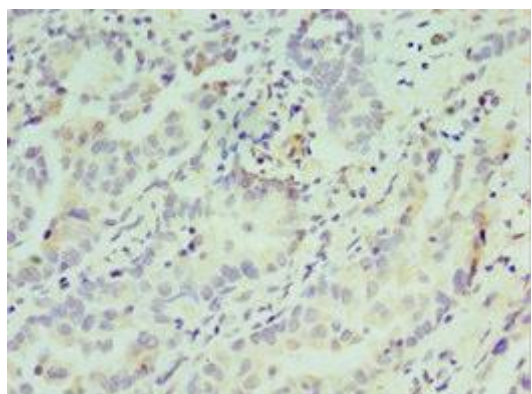


Western blot.

All lanes: ATF7 antibody at 12 μ g/ml + HeLa whole cell lysate. Secondary. Goat polyclonal to rabbit IgG at 1/10000 dilution. Predicted band size: 53, 50, 51, 34, 14, 52 kDa. Observed band size: 53 kDa.



Immunohistochemistry of paraffin-embedded human testis tissue using PACO43860 at dilution of 1:100.



Immunohistochemistry of paraffin-embedded human lung cancer using PACO43860 at dilution of 1:100.