

FUT6 Antibody



PACO43856

Product Information

Size:

50ul

Reactivity:

Human

Source:

Rabbit

Isotype:

IgG

Applications:

ELISA, WB, IHC

Recommended dilutions:

ELISA:1:2000-1:10000, WB:1:500-1:2000,
IHC:1:20-1:200

Protein Background:

Enzyme involved in the biosynthesis of the E-Selectin ligand, sialyl-Lewis X. Catalyzes the transfer of fucose from GDP-beta-fucose to alpha-2,3 sialylated substrates.

Gene ID:

FUT6

Uniprot

P51993

Synonyms:

Alpha-(1,3)-fucosyltransferase 6 (EC 2.4.1.65) (Fucosyltransferase 6) (Fucosyltransferase VI) (Fuc-TVI) (FucT-VI) (Galactoside 3-L-fucosyltransferase), FUT6, FCT3A

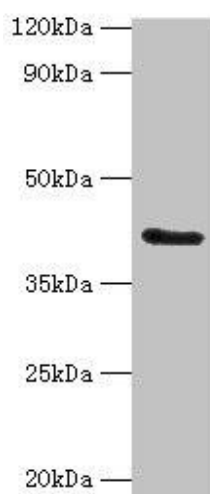
Immunogen:

Recombinant Human Alpha-(1,3)-fucosyltransferase 6 protein (170-359AA).

Storage:

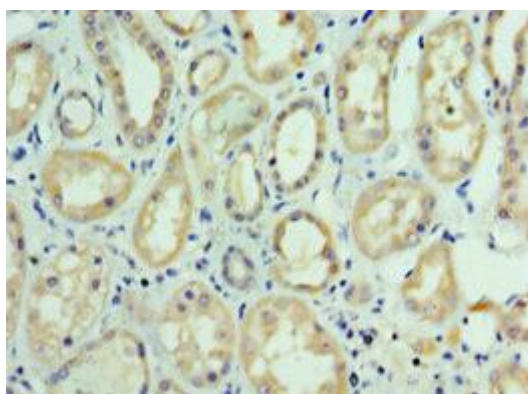
PBS with 0.02% sodium azide, 50% glycerol, pH7.3.

Product Images

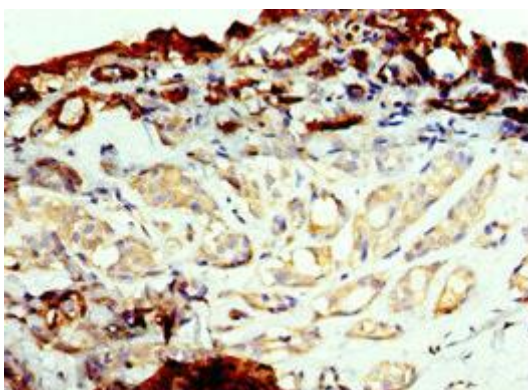


Western blot.

All lanes: FUT6 antibody at 4 μ g/ml + HeLa whole cell lysate. Secondary. Goat polyclonal to rabbit IgG at 1/10000 dilution. Predicted band size: 42, 43 kDa. Observed band size: 42 kDa.



Immunohistochemistry of paraffin-embedded human kidney tissue using PACO43856 at dilution of 1:100.



Immunohistochemistry of paraffin-embedded human breast cancer using PACO43856 at dilution of 1:100.