

VAMP3 Antibody



PACO43854

Product Information

Size:

50ul

Reactivity:

Human

Source:

Rabbit

Isotype:

IgG

Applications:

ELISA, IHC

Recommended dilutions:

ELISA:1:2000-1:10000, IHC:1:20-1:200

Protein Background:

SNARE involved in vesicular transport from the late endosomes to the trans-Golgi network.

Gene ID:

VAMP3

Uniprot

Q15836

Synonyms:

Vesicle-associated membrane protein 3 (VAMP-3) (Cellubrevin) (CEB) (Synaptobrevin-3), VAMP3, SYB3

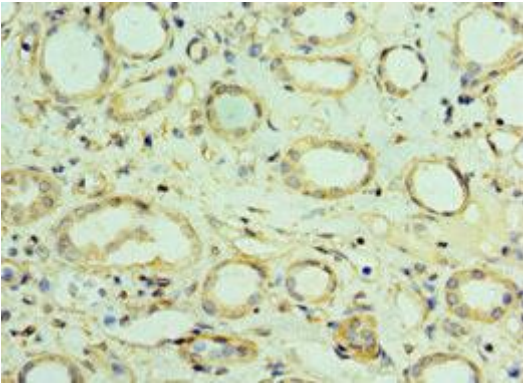
Immunogen:

Recombinant Human Vesicle-associated membrane protein 3 protein (1-80AA).

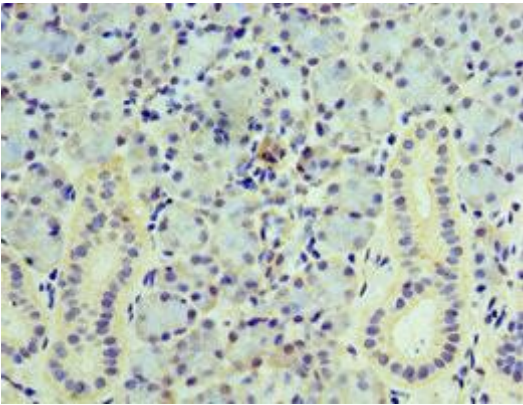
Storage:

PBS with 0.02% sodium azide, 50% glycerol, pH7.3.

Product Images



Immunohistochemistry of paraffin-embedded human kidney tissue using PACO43854 at dilution of 1:100.



Immunohistochemistry of paraffin-embedded human pancreatic tissue using PACO43854 at dilution of 1:100.