

EFNA3 Antibody



PACO43846

Product Information

Size:

50ul

Reactivity:

Human

Source:

Rabbit

Isotype:

IgG

Applications:

ELISA, WB, IHC

Recommended dilutions:

ELISA:1:2000-1:10000, WB:1:200-1:1000,
IHC:1:20-1:200

Protein Background:

Cell surface GPI-bound ligand for Eph receptors, a family of receptor tyrosine kinases which are crucial for migration, repulsion and adhesion during neuronal, vascular and epithelial development. Binds promiscuously Eph receptors residing on adjacent cells, leading to contact-dependent bidirectional signaling into neighboring cells. The signaling pathway downstream of the receptor is referred to as forward signaling while the signaling pathway downstream of the ephrin ligand is referred to as reverse signaling.

Gene ID:

EFNA3

Uniprot

P52797

Synonyms:

Ephrin-A3 (EFL-2) (EHK1 ligand) (EHK1-L) (EPH-related receptor tyrosine kinase ligand 3) (LERK-3), EFNA3, EFL2 EPLG3 LERK3

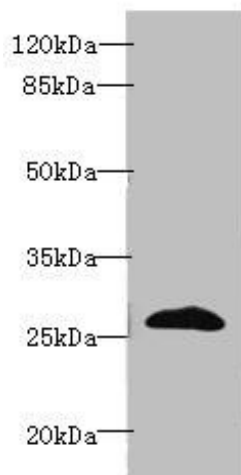
Immunogen:

Recombinant Human Ephrin-A3 protein (23-214AA).

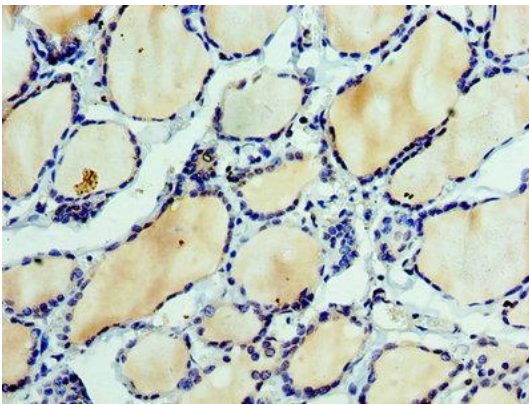
Storage:

PBS with 0.02% sodium azide, 50% glycerol, pH7.3.

Product Images



Western blot. All lanes: EFNA3 antibody at 2 μ g/ml + HepG2 whole cell lysate. Secondary. Goat polyclonal to rabbit IgG at 1/10000 dilution. Predicted band size: 27, 24 kDa. Observed band size: 27 kDa.



Immunohistochemistry of paraffin-embedded human thyroid tissue using PACO43846 at dilution of 1:100.